

# GREENLAND

## IN FIGURES 2002

32.856	103.231	190.874	304.750	170.793
54.533	119.038	221.990	386.569	203.364
52.744	97.071	198.750	381.285	188.243
56.661	97.903	175.644	315.540	159.600
63.570	155.065	288.445	470.455	264.178
70.073	116.053	216.583	328.153	192.557
80.563	142.531	263.358	438.377	244.285
70.968	120.966	191.445	366.347	187.594
66.557	119.993	210.042	325.098	187.594
66.174	121.130	227.725	383.323	204.662
63.071	143.814	243.933	409.317	232.671
68.031	151.427	243.725	397.507	227.833
73.857	130.111	235.230	397.507	209.053
66.665	161.678	257.774	361.805	224.788
70.747	120.429	189.216	270.230	164.635
60.414	116.711	205.134	363.271	188.243
57.056	123.300	203.901	304.442	183.570



STATISTICS GREENLAND  
Greenland Home Rule Government

# **GREENLAND**

**IN FIGURES 2002**



**STATISTICS GREENLAND**  
**Greenland Home Rule Government**

# Index

3	POPULATION	22	ENERGY
8	ELECTION	23	EDUCATION
10	FISHING AND HUNTING	24	CULTURE
13	LABOUR MARKET	25	TOURISM
14	INCOME	26	SOCIAL & HEALTH
15	PRICES AND ECONOMY	29	HOUSING
18	FOREIGN TRADE	30	JUDICIAL SYSTEM
19	TRANSPORT	31	CLIMATE

## Greenland in figures 2002

Published on behalf of Statistics Greenland  
Greenland Home Rule Government  
Telephone: +299 34 50 00 · Fax: +299 32 29 54  
E-mail: [stat@gh.gl](mailto:stat@gh.gl) · [www.statgreen.gl](http://www.statgreen.gl)

Editors: Lene Baunbæk · Thorkild Knudsen  
Typesetting and graphics: Infodesign ApS · [www.infodesign.gl](http://www.infodesign.gl)  
Photos: Knud Josefsen

© Statistics Greenland 2002  
Acknowledgement must be made  
of any quotations reproduced.

### LIST OF SIGNS:

- ... Data not available
- . Category not applicable
- \* Provisional or estimated figures
- Nil

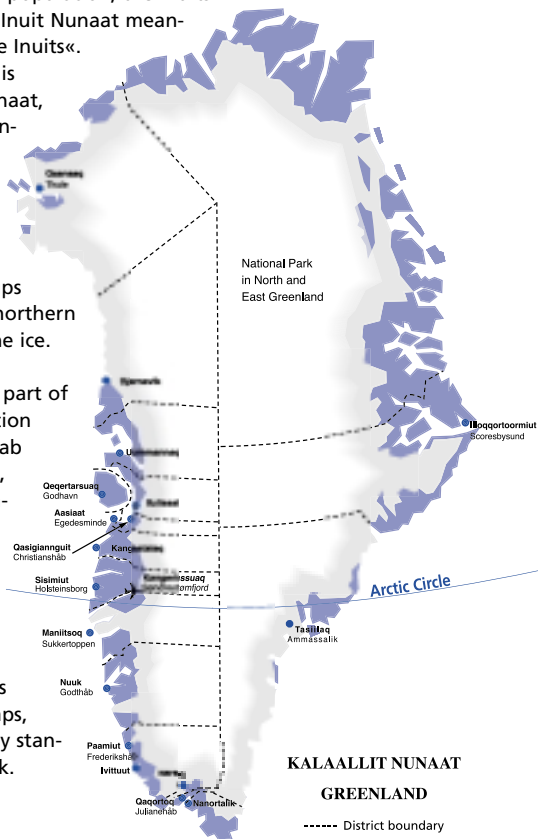
# Kalaallit Nunaat

Earlier the original population, the Inuits called the country Inuit Nunaat meaning »country of the Inuits«.

Today the country is called Kalaallit Nunaat, which means »country of the Greenlanders«. Kalaallit Nunaat has been inhabited since around 2,500 B.C., when smaller groups immigrated from northern Canada crossing the ice.

Kalaallit Nunaat is part of the Danish federation called Rigsfællesskab between Denmark, Faeroes and Greenland.

After a referendum Kalaallit Nunaat acquired home rule in 1979. The country has its own flag and stamps, but share monetary standard with Denmark.



## Population in municipalities January 1<sup>st</sup>

	1990	1994	1998	2002
<b>Total</b>	<b>55,558</b>	<b>55,419</b>	<b>56,076</b>	<b>56,542</b>
Nanortalik	2,672	2,679	2,550	2,516
Qaqortoq	3,543	3,568	3,487	3,365
Narsaq	2,148	2,081	2,088	2,051
Ivittuut	237	215	170	153
Paamiut	2,556	2,408	2,180	2,014
Nuuk	12,687	12,935	13,427	14,272
Maniitsoq	4,075	3,949	3,872	3,703
Sisimiut	5,090	5,089	5,445	5,960
Kangaatsiaq	1,347	1,520	1,502	1,505
Aasiaat	3,599	3,469	3,398	3,404
Qasigiannguit	1,712	1,646	1,534	1,462
Ilulissat	4,568	4,492	4,625	4,781
Qeqertarsuaq	1,164	1,191	1,123	1,067
Uummanaq	2,677	2,624	2,774	2,738
Upernavik	2,375	2,660	2,872	2,903
Qaanaaq	846	876	875	854
Ammassalik	2,889	2,924	2,936	2,979
Illoqqortoormiut	554	524	563	549
Outside municipalities	819	569	655	266

## Population by sex and age January 1<sup>st</sup> 2002

	Total	Men	Women
<b>Total</b>	<b>56,542</b>	<b>30,180</b>	<b>26,362</b>
0-6 years	6,566	3,324	3,242
7-14 years	8,377	4,224	4,153
15-17 years	2,436	1,258	1,178
18-24 years	5,218	2,688	2,530
25-59 years	29,131	16,252	12,879
60-66 years	2,414	1,355	1,059
67 years and over	2,400	1,079	1,321

## Urban and rural population in municipalities

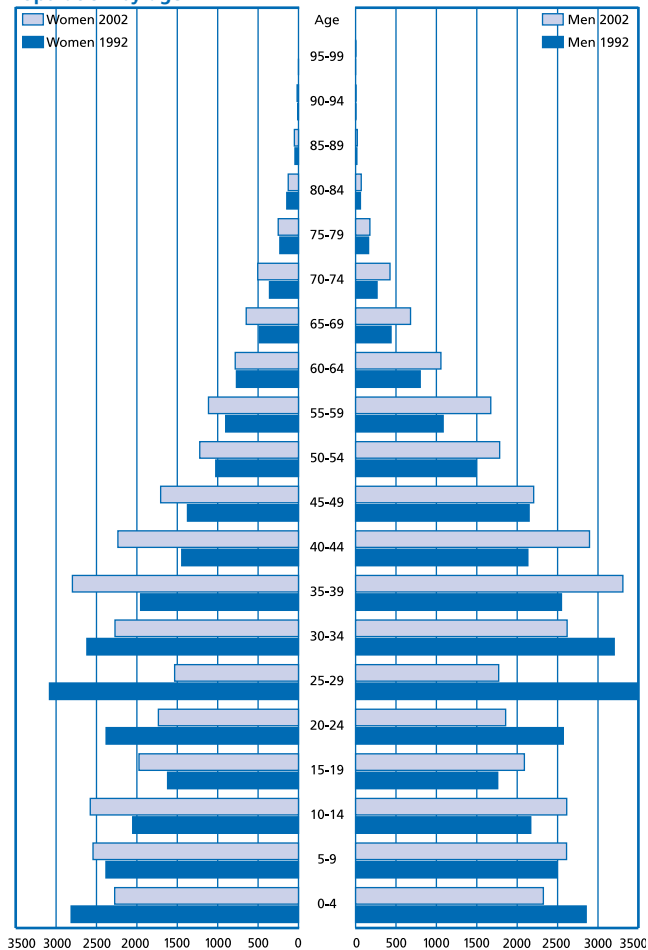
	1992		2002	
	Cities	Settlements	Cities	Settlements
<b>Total</b>	<b>44,443</b>	<b>10,942</b>	<b>46,323</b>	<b>10,219</b>
Nanortalik	1,483	1,198	1,544	972
Qaqortoq	3,157	413	3,086	279
Narsaq	1,742	344	1,693	358
Ivittuut	2	192	-	153
Paamiut	2,129	311	1,834	180
Nuuk	12,233	518	13,889	383
Maniitsoq	3,048	937	2,905	798
Sisimiut	5,004	218	5,222	738
Kangaatsiaq	596	847	673	832
Aasiaat	3,239	280	3,179	225
Qasigiannqut	1,575	106	1,368	94
Ilulissat	4,156	415	4,285	496
Qeqertarsuaq	1,120	65	1,011	56
Uummannaq	1,398	1,196	1,464	1,274
Upernavik	995	1,518	1,185	1,718
Qaanaaq	558	275	642	212
Ammassalik	1,549	1,371	1,816	1,163
Illoqqortoormiut	459	79	527	22
Outside municipalities	-	659	-	266

## Greenlanders in Denmark and Danes in Greenland

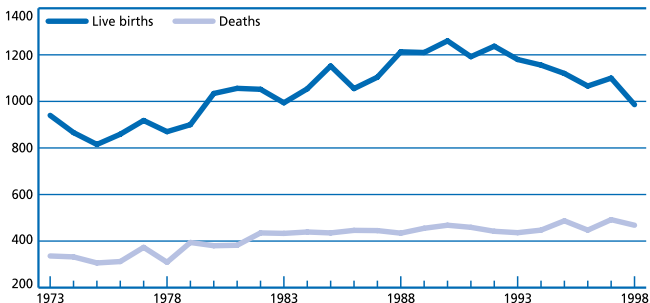
	1972	1980	1985	2000
	----- NUMBER OF PERSONS -----			
<b>Greenlanders in Denmark</b>	<b>2,843 *</b>	<b>5,936 *</b>	<b>8,889</b>	<b>12,040</b>
Aged 15 years and older	2,843	5,936	6,926	8,853
Aged 20 years and older	1,831	4,427	5,392	8,188
<b>Danes in Greenland</b>	<b>...</b>	<b>8,826</b>	<b>9,353</b>	<b>6,755</b>
Aged 15 years and older	...	7,123	7,752	6,065
Aged 20 years and older	...	6,831	7,362	5,870

\*aged 15 years and older

## Population by age



## Births and deaths



## Immigration and emigration

	1981	1986	1991	1996	2001
<b>Net immigration</b>	<b>142</b>	<b>-300</b>	<b>-909</b>	<b>-483</b>	<b>-247</b>
<b>Immigrations, total</b>	<b>3,694</b>	<b>3,560</b>	<b>2,464</b>	<b>2,414</b>	<b>2,461</b>
Greenlandic nationals	995	689	550	662	804
Nationals of foreign countries	2,699	2,871	1,914	1,752	1,657
<b>Emigration, total</b>	<b>3,552</b>	<b>3,860</b>	<b>3,373</b>	<b>2,897</b>	<b>2,708</b>
Greenlandic nationals	976	925	825	1,081	1,038
Nationals of foreign countries	2,576	2,935	2,548	1,816	1,670

## Internal migration

	1981	1986	1991	1996	2001
<b>Total internal migration</b>	<b>11,193</b>	<b>14,748</b>	<b>15,980</b>	<b>17,918</b>	<b>18,341</b>
Between municipalities	4,096	4,540	4,669	5,068	5,410
Within same city	6,010	8,555	9,565	10,300	10,527
Between cities	3,334	3,755	3,778	3,845	3,819
From settlement to city	679	764	752	956	1,035
From city to settlement	493	518	735	865	853
Within same settlement	309	781	714	1,326	1,049
From one settlement to another	186	226	292	321	379
From one station to another	182	149	144	305	679



## Election of the Greenland Landsting February 16th 1999 by municipalities

	Electorate	Votes cast	Valid votes	Percentage voting
<b>Total</b>	<b>37,485</b>	<b>28,825</b>	<b>28,490</b>	<b>76.9</b>
Nanortalik	1,677	1,307	1,298	77.9
Qaqortoq	2,435	1,944	1,916	79.8
Narsaq	1,470	1,174	1,160	79.9
Ivittuut	128	51	51	39.8
Paamiut	1,416	1,125	1,116	79.5
Nuuk	9,911	7,279	7,148	73.4
Maniitsoq	2,512	1,916	1,912	76.3
Sisimiut	3,506	2,714	2,686	77.4
Kangaatsiaq	875	749	748	85.6
Aasiaat	2,390	1,895	1,880	79.3
Qasigiannguit	1,055	852	851	80.8
Ilulissat	3,166	2,463	2,446	77.8
Qeqertarsuaq	722	570	567	78.9
Uummannaq	1,813	1,448	1,422	79.9
Upernavik	1,753	1,303	1,277	74.3
Qaanaaq	527	445	437	84.4
Ammassalik	1,805	1,308	1,296	72.5
Illoqqortoormiut	324	282	279	87.0

## Election of the Greenland Landsting February 16th 1999 by parties

	Votes	Percent	Mandates	Elected women
<b>Total</b>	<b>28,490</b>	<b>100.0</b>	<b>31</b>	<b>6</b>
Atassut	7,100	24.9	8	1
Inuit Ataqatigiit	6,217	21.8	7	3
Siumut	9,899	34.7	11	1
Outside parties	5,014	17.6	5	1

## Election of municipality councils April 3rd 2001

	Greenland	South	Central	Disco	North/ East
Electorate	37,912	7,120	16,315	8,230	6,247
Valid votes	25,692	5,334	9,900	6,103	4,355
Invalid votes	289	54	128	56	51
Percentage voting	68.5	75.7	61.5	74.8	70.5
<b>Distribution of votes</b>	<b>100.0</b>	<b>100.0</b>	<b>100.0</b>	<b>100.0</b>	<b>100.0</b>
Atassut	24.5	19.1	27.2	24.4	25.0
Inuit Ataqtigiit	20.3	29.3	18.9	18.7	14.9
Siumut	44.1	44.6	46.5	30.6	57.2
Alliance of candidates	10.2	3.5	7.4	26.1	2.6
Single candidates	0.8	3.5	-	0.2	0.3

## Election to the Folketing November 20th 2001

	Greenland	South	Central	Disco	North/ East
Electorate	38,698	7,135	16,891	8,321	6,351
Valid votes	23,255	4,487	9,956	5,181	3,631
Invalid votes	566	93	310	91	72
Percentage voting	61.6	64.2	60.8	63.4	58.3
<b>Distribution of votes</b>	<b>100.0</b>	<b>100.0</b>	<b>100.0</b>	<b>100.0</b>	<b>100.0</b>
Atassut	22.1	20.3	22.8	22.0	22.4
Inuit Ataqtigiit	30.8	32.9	31.8	32.4	23.4
Siumut	25.9	29.1	25.9	20.6	29.6
Alliance of candidates	19.1	16.8	18.7	19.0	22.9
Single candidates	2.1	0.8	0.8	6.0	1.7

## Referendum on the European Union Februar 23th 1982

	Percentage voting	Percentage of valid votes	
		For	Against
Should Greenland continue in the European Union?	74.9	47.0	53.0

## Fishing

Fishing is the lifeline of Greenland and the primary industry of the country. 95 percent of all exports come from fishing and manufacturing of the products in the fishing industry, especially prawns and Greenlandic halibut. The fishing is founded on quotas that are being fixed once a year in the light of the biologists' guidelines. By political agreement fishing as well as hunting is carried out on a sustainable level.



## Fishing

	1992	1994	1996	1998	2000*
<b>Near Greenland</b>	----- 1,000 TONS -----				
<b>Total</b>	<b>111.7</b>	<b>112.6</b>	<b>115.9</b>	<b>114.0</b>	<b>150.3</b>
Prawn	81.9	79.8	72	69.5	81.2
Cod	10.3	9.1	7.5	5.6	3.9
Halibut	12.2	14	20.4	33.8	26.3
Crab	...	-	0.8	2	10.6
Other catches	7.3	9.7	15.2	3.1	28.3
<b>Total catch</b>	----- 1,000 TONS -----				
<b>Total</b>	<b>184.6</b>	<b>228.5</b>	<b>380.2</b>	<b>372.9</b>	<b>259.2</b>
Greenlandic fishermen	140.5	112.6	115.9	128.6	144.4
Charter boat fisheries	3.2	3.8	-	-	-
Foreign fishermen	40.9	112.1	264.3	244.3	114.8

\* Provisional figures

## Active fishing vessels at the end of 2001

	Greenland total	Region South	Region Central	Region North	Region East
	----- NUMBERS -----				
<b>Fishing vessels, total</b>	<b>997</b>	<b>199</b>	<b>653</b>	<b>104</b>	<b>41</b>
Coasting vessels	926	194	592	101	39
Ocean vessels	71	5	61	3	2

## Whaling

	1993	1995	1997	1999	2001
	----- NUMBERS -----				
<b>Total</b>	<b>3,003</b>	<b>2,789</b>	<b>3,331</b>	<b>3,541</b>	<b>2,602</b>
<b>Large whales, total</b>	<b>123</b>	<b>167</b>	<b>169</b>	<b>191</b>	<b>160</b>
Little piked whale	110	155	158	184	152
Fin whale	13	12	11	7	8
<b>Small whales, total</b>	<b>2,880</b>	<b>2,622</b>	<b>3,162</b>	<b>3,350</b>	<b>2,442</b>
Beluga	529	666	568	493	289
Narwhale	633	537	794	912	538
Harbour porpoise	1,718	1,418	1,592	1,830	1,573
Long-finned pilot whale	-	1	208	115	42

## Cashed hunting certificates

	1993	1995	1997	1999	2001
	----- NUMBER OF PERSONS -----				
<b>Total</b>	<b>9,519</b>	<b>7,386</b>	<b>9,602</b>	<b>11,026</b>	<b>11,971</b>
Hunters	4,067	3,294	2,617	2,706	2,669
Sportsmen	5,452	4,092	6,985	8,320	9,302

## Livestock

	1980	1990	2000	2001
	----- NUMBER OF ANIMALS -----			
Sheep	23,134	19,929	20,444	20,394
Horses	197	145	138	131
Beehives	-	-	18	18
Fowls	538	386	175	170
Cows	-	-	5	5
Tame reindeer	3,800	6,000	2,000	2,480

## Labour market January 1st

	1999	2000	2001	2002*
	----- NUMBER OF PERSONS -----			
Total population	56,087	56,124	56,245	56,542
Total labour force <sup>1)</sup>	30,745	30,929	31,181	31,506
Work frequency <sup>2)</sup>	82.2	82.5	82.8	82.9
Men	81.4	81.5	81.8	81.9
Women	83.3	83.8	84.0	84.2
Employees in employment	28,687	28,935	28,936	29,467
Unemployed persons <sup>3)</sup>	2,058	1,994	2,245	2,039
Unemployment rate	6.7	6.4	7.2	6.5
Men	7.2	7.0	8.0	6.9
Women	6.1	5.8	6.2	5.9

1) Persons aged 15-62 years living in cities.

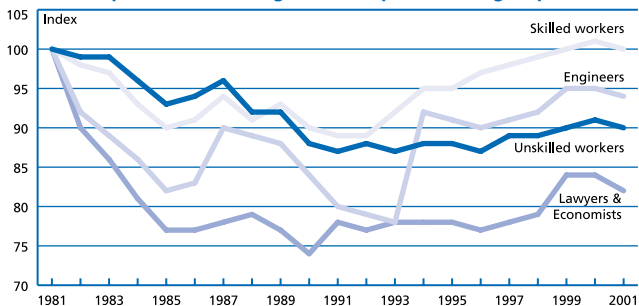
2) The work frequency states the number of persons in the labour force aged 15-62 years in percent of the total population aged 15-62 years.

3) Persons out of work in the middle of the first quarter.

## Employment by sectors

	1974			1996		
	Total	Born in Greenland	Born outside Greenland	Total	Born in Greenland	Born outside Greenland
<b>Total active population</b>	<b>22,430</b>	<b>16,120</b>	<b>6,310</b>	<b>25,170</b>	<b>20,220</b>	<b>4,950</b>
Fishing/ fishing industry	6,970	6,430	540	6,380	6,120	260
Quarrying	270	50	220	40	10	30
Tourism	40	30	10	210	140	70
Public infrastructure	2,070	1,190	880	2,130	1,590	540
Public administration and services	5,320	3,800	1,520	7,950	5,640	2,310
Base areas	1,460	40	1,420	240	50	190
Other landbased employment	6,300	4,580	1,720	8,220	6,670	1,550

## The development in real wages in four public workgroups



## Taxable income in 1999, by birthplace and municipalities

	Outside Greenland		In Greenland	
	Singles	Couples	Singles	Couples
	----- KR. -----			
<b>Greenland</b>	<b>273,160</b>	<b>236,136</b>	<b>102,077</b>	<b>134,491</b>
Nanortalik	213,316	226,981	75,377	108,700
Qaqortoq	211,230	256,795	104,326	154,370
Narsaq	243,031	221,466	91,897	140,360
Paamiut	338,643	232,189	253,020	200,615
Nuuk	248,930	206,558	92,067	126,646
Maniitsoq	308,394	310,539	133,578	202,564
Sisimiut	236,030	226,645	101,256	131,621
Kangaatsiaq	298,753	279,310	117,688	162,610
Aasiaat	256,252	144,112	65,036	99,728
Qasigiannugit	239,556	236,922	94,483	129,460
Ilulissat	249,879	225,266	104,248	141,844
Qeqertarsuaq	278,334	224,459	103,099	142,197
Uummannaq	176,250	239,479	113,788	134,451
Upernavik	411,858	183,210	91,213	125,466
Qaanaaq	334,522	222,215	77,254	105,826
Ammassalik	270,923	269,324	73,657	105,080
Illoqqortoormiut	315,430	286,293	73,455	97,648
Outside municipalities	285,553	258,682	71,944	111,657

## Gross domestic product at factor cost and market prices

	1990	1994	1995	1998
	----- MIO. KR. -----			
Compensation of employees	5,406	5,325	5,630	6,266
Gross operating surplus	993	964	1,132	1,453
<b>GDP at factor cost</b>	<b>6,399</b>	<b>6,289</b>	<b>6,762</b>	<b>7,719</b>
Indirect taxes	509	610	544	628
Subsidies	602	500	533	641
<b>GDP at market prices</b>	<b>6,306</b>	<b>6,399</b>	<b>6,773</b>	<b>7,706</b>
Transfers to Denmark and abroad, net	450	350	275	200
<b>Gross national income</b>	<b>5,856</b>	<b>6,049</b>	<b>6,498</b>	<b>7,506</b>
Government expenditure	2,941	2,924	2,974	3,190
Of which general grants	1,531	2,375	2,393	2,575
<b>Gross disposable national income</b>	<b>8,797</b>	<b>8,973</b>	<b>9,472</b>	<b>10,696</b>
Of which in the public sector	5,072	4,497	4,499	4,865
Of which in the private sector	3,725	4,476	4,973	5,830
Gen. government final consumption	3,369	3,547	3,647	4,135

## Building cost indexes, annual change

	1985/86	1990/91	1995/96	2000/01
	----- PERCENT -----			
Single-family houses	7.48	5.13	4.15	1.65
Multi-family houses	7.33	4.10	4.19	2.07
Water/Sewer	5.84	3.54	2.25	1.25



## Consumer price index and its sub-indices, annual change

	1985/86	1990/91	1995/96	2000/01
	----- PERCENT -----			
<b>Consumer price index, total</b>	<b>5.38</b>	<b>4.54</b>	<b>1.10</b>	<b>2.87</b>
Food	5.39	2.52	2.50	3.59
Beverages	-1.92	-1.21	2.80	0.75
Tobacco	10.19	1.20	1.50	-0.08
Clothing and footwear	17.88	2.50	2.10	1.30
Gross rent (dwelling)	5.58	1.25	-0.10	1.47
Fuel and power	14.01	4.79	-3.70	6.42
Furniture, household equipment, etc.	4.27	6.01	3.40	1.08
Medical care and health expenses	5.02	3.59	-2.30	-3.61
Transport	...	-1.83	3.40	9.88
Communication	4.85	2.29	-10.70	-9.07
Hunting, fishing, etc.	2.07	2.82	-0.60	2.95
Recreation, entertainment, etc.	7.41	...	1.20	3.81
Miscellaneous goods and services	4.76	3.43	2.60	1.89

## Expenditure of general government sector, by function

	1994	1996	1998	2000
	----- MIO. KR. -----			
<b>Total</b>	<b>5,721</b>	<b>5,848</b>	<b>6,329</b>	<b>6,776</b>
General public services	606	612	661	734
Defence, etc.	319	320	348	260
Law and order and safety	146	155	158	170
Education	801	860	962	1,091
Health	609	611	678	792
Social security and welfare services	1,188	1,323	1,485	1,634
Housing and community amenities	328	308	294	351
Religious, recreational and cultural services	192	229	216	250
Energy supplies	51	43	44	110
Fishing, agriculture, forestry, etc.	212	148	168	167
Mining and quarrying, manufacturing and construction	326	266	274	243
Communications	294	284	322	303
Commerce, etc.	234	293	321	339
Other functions	417	395	399	332

## Companies owned by the Homerule in 2001

	Turnover	Profit	Employees
	--- MIO. KR. ---	----- AVERAGE -----	
Royal Greenland A/S	3,514	-286	2,097
KNI Pilersuisoq A/S	1,446	62	866
KNI Pisiffik A/S	738	21	491
Great Greenland	29	7	43
Amutsiviit Greenlands Shipyard	23	9	36
A/S Cooperative housing society (INI)	134	7	329
Royal Arctic Line A/S	1,263	17	457
Air Greenland A/S	541	37	622
Tele Greenland A/S	5	-5	28
Greenland Survey A/S (ASIAQ)	563	...	435
Grønlands Lufthavnsvæsen	301	-124	471
NunaOil A/S	1	-6	4
Nuka A/S	95	-2	298



## Imports, by end-use

	1990	1995	1998	2001*
	----- MIO. KR. -----			
<b>Total import</b>	<b>2,756</b>	<b>2,431</b>	<b>2,740</b>	<b>2,466</b>
Intermediate goods for agriculture	18	10	21	23
Intermediate goods for construction industry	299	355	355	226
Intermediate goods for other industries	510	407	514	445
Fuels, lubricants and electric current	354	193	229	410
Machinery and other capital equipment	203	167	193	173
Transport equipment	131	155	97	90
Goods for household consumption	877	683	890	858
Goods not elsewhere specified	364	461	443	241

\* Provisional figures

## Exports, by SITC divisions

	1990	1995	1998	2001*
	----- MIO. KR. -----			
<b>Total export</b>	<b>2,795</b>	<b>2,081</b>	<b>1,702</b>	<b>2,251</b>
Food, live animals, total	2,333	1,941	1,598	1,986
of which:				
Fish and fish products	2,332	1,936	1,581	1,983
Meat and meat products	1	0	9	2
Feeding stuff for animals	1	5	7	2
Beverages and tobacco	0	0	0	0
Raw materials, inedible	366	14	7	10
of which:				
Untreated hides, skin, etc.	1	6	7	10
Ore- and metal waste	364	0	0	0
Raw animal and vegetable material	2	7	0	0
Mineral fuels and lubricants, etc.	24	16	30	1
Chemicals and chemical products	0	0	0	0
Manufactured products mainly semi-manufactured products	2	1	1	2
Machinery and transport equipment	13	45	9	69
Manufactured products	23	24	13	17
Miscellaneous articles and transactions	33	40	45	166

\* Provisional figures



## Transportation

In Greenland roads connect no cities. Therefore all traffic between cities and settlements is happening either by ship, boat, snowscooter or – as usually – by airplane or helicopter. In the cities most transportation is happening by car. The main gateways to Greenland are the former American military bases in Narsarsuaq and Kangerlussuaq. From here traffic to all of Greenland is being distributed – either by airplane or by helicopter.



## Air passengers traffic

	1991	1995	1999	2000	2001
	----- NUMBER OF PASSENGERS -----				
<b>Domestic air traffic</b>	<b>157,509</b>	<b>178,203</b>	<b>231,887</b>	<b>253,551</b>	<b>215,587</b>
Airplanes	72,241	92,874	169,732	189,177	177,886
Helicopters	85,268	85,329	62,155	64,374	37,701
<b>Settlement flights</b>	<b>9,618</b>	<b>10,016</b>	<b>11,098</b>	<b>22,406</b>	<b>34,786</b>
Southgreenland	1,088	980	418	284	201
Disco area	2,720	3,215	3,074	2,510	9,910
Northgreenland	2,975	3,390	4,513	7,398	12,339
Eastgreenland	2,835	2,431	3,093	12,214	12,336
<b>Air traffic to/ from Greenland</b>	<b>68,327</b>	<b>87,465</b>	<b>100,094</b>	<b>105,995</b>	<b>100,282</b>
Kangerlussuaq – Copenhagen	50,320	62,028	72,924	83,371	78,923
Narsarsuaq – Copenhagen	12,967	6,815	17,630	18,545	18,492
Narsarsuaq – Kanger- lussuaq – Copenhagen	...	7,360	...	...	...
Greenland – Iceland	3,130	8,770	6,530	1,510	2,867
Nuuk – Iqaluit	1,910	...	462	372	...
Kangerlussuaq – Iqaluit	...	2,492	2,548	2,197	1774

## Shipping

	1997	1998	1999	2000	2001
----- NUMBER OF PASSENGERS -----					
<b>Passengers, total</b>	<b>91,507</b>	<b>100,969</b>	<b>92,544</b>	<b>88,255</b>	<b>93,285</b>
From city to settlement	58,504	58,757	55,537	53,425	56,438
From city to settlement / settlement to city in:	33,003	42,212	37,007	34,830	36,847
- Region South	20,731	22,339	20,445	19,715	21,729
- Region Central	...	3,875	4,232	4,054	4,144
- Region North	10,190	10,391	9,561	9,976	10,069
- District Upernavik	...	1,997	1,053	.	.
- District Uummannaq	2,082	2,087	452	.	.
- District Tasiilaq	...	1,523	1,264	1,085	905
----- 1,000 M <sup>3</sup> -----					
<b>Cargo freight, total</b>	<b>595</b>	<b>593</b>	<b>627</b>	<b>650</b>	<b>654</b>
From Denmark to Greenland	302	306	332	347	341
From Greenland to Denmark	166	162	175	185	204
Greenland internal	127	125	120	118	109

## Motor vehicle stock

	1980	1985	1990	1995	2001
<b>Automobiles, total</b>	<b>2,448</b>	<b>3,153</b>	<b>3,251</b>	<b>3,603</b>	<b>4,274</b>
Private cars	1,043	1,479	1,754	1,881	2,485
Taxis	243	230	220	171	166
Ambulances, etc.	20	25	29	36	31
Busses	29	27	44	52	72
Fire-engines	71	74	66	91	109
Goods motor vehicles	1,042	1,318	1,138	1,372	1,411
Motor cycles	41	13	7	2	8
Other vehicles	10	27	69	18	21
Private cars per 1,000 inhabitants	21.0	27.9	31.6	33.8	44.2

## Energy consumption, gross

	1990	1995	1996	1997	1998	1999
	----- GWh -----					
<b>Gross Energy consumption, total</b>	<b>2,369</b>	<b>2,179</b>	<b>2,334</b>	<b>2,358</b>	<b>2,276</b>	<b>2,433</b>
Coal, coke and brown coal	1	-	-	-	-	-
Water power	-	165	168	156	164	178
Other renewable energy sources	-	29	29	26	29	32
Motor gasoline	88	103	99	106	118	121
Gas/Diesel oil	2,073	1,635	1,772	1,795	1,704	1,775
Kerosene and Jet fuel	192	237	259	270	253	314
Liquid gas (LPG)	4	3	3	3	3	2
Oil for non-heating purposes	11	8	5	3	5	12

## Production of electricity, water and heat

	1990	1995	1996	1997	1998	1999	2000	2001
	----- GWh -----							
<b>Production of electricity and heat, total</b>	<b>627</b>	<b>525</b>	<b>566</b>	<b>577</b>	<b>551</b>	<b>586</b>	<b>510</b>	<b>497</b>
Electricity	165	274	279	274	281	295	298	284
Heat	200	216	208	205	206	218	212	213
	----- 1,000 M <sup>3</sup> -----							
Water	5,950	5,512	5,430	5,453	5,401	5,383	5,628	5,334

## Outlet of CO<sub>2</sub> from energy consumption

	1990	1995	1996	1997	1998	1999
	----- TONS -----					
<b>Total</b>	<b>627</b>	<b>525</b>	<b>566</b>	<b>577</b>	<b>551</b>	<b>586</b>
Gas oil	552	436	472	478	454	473
Kerosene	50	61	67	70	66	81
Gasoline	23	27	26	28	31	32
Other	1	1	1	1	1	1
	----- KG -----					
Outlet of CO <sub>2</sub> per head	11.3	9.4	10.1	10.3	9.8	10.5

## Schools in Greenland

	1990/91	1995/96	1997/98	1999/00
	----- NUMBER OF PERSONS -----			
<b>Pupils, total</b>	<b>9,249</b>	<b>10,422</b>	<b>10,790</b>	<b>11,164</b>
<b>School teachers, total</b>	<b>942</b>	<b>1,019</b>	<b>1,028</b>	<b>1,109</b>
Greenlandic teachers	646	698	762	865
Danish teachers	296	321	266	244
	----- HOURS -----			
Teachers per 100 students	10.2	9.8	9.5	9.9
Teachers hours per pupil	...	2.90	2.96	2.95

## Expenditure on schools

	1995	1997	1999	2001
	----- MIO. KR. -----			
<b>Total expenditure</b>	<b>450</b>	<b>472</b>	<b>469</b>	<b>171</b>
Homerule expenditure	52	53	336	10
Municipal expenditure	112	123	133	161
Secondary level, second stage	34	41	41	47
Schools of the Homerule	9	13	14	16
In-service training	24	22	25	-
Other schools	19	18	21	37

## Qualifying educations completed

	1980	1985	1990	1995	2000
<b>Completed educations, total</b>	<b>14</b>	<b>141</b>	<b>752</b>	<b>602</b>	<b>400</b>
<b>Vocational educations and training, total</b>	<b>5</b>	<b>79</b>	<b>590</b>	<b>389</b>	<b>269</b>
of which:					
Trade and Office	-	26	254	156	93
Social and Health	-	4	32	77	68
<b>Medium-cycle higher educations, total</b>	<b>9</b>	<b>50</b>	<b>127</b>	<b>163</b>	<b>114</b>
of which:					
Teacher education	-	3	13	21	33
Trade, Edb etc.	5	8	28	43	24
<b>Long-cycle higher educations, total</b>	<b>-</b>	<b>11</b>	<b>34</b>	<b>48</b>	<b>17</b>
of which:					
Natural science educations	-	-	2	2	3
Social science educations	-	3	11	10	9
Humanistic educations	-	4	4	11	2
Commercial educations	-	3	8	10	1
Other educations total	-	1	1	2	-



## Broadcasting time by Greenlandic Radio/TV (KNR)

	1990	1992	1994	1996	1998	2000
	----- HOURS PER YEAR -----					
<b>Radio broadcasting, total</b>	<b>5,075</b>	<b>5,471</b>	<b>5,368</b>	<b>5,035</b>	<b>5,972</b>	<b>5,812</b>
Transmissions in:						
Greenlandic	2,494	2,786	2,406	2,765	2,614	2,728
Danish etc.	1,272	1,166	861	825	1,296	1,019
Musictransmissions	1,309	1,519	2,101	1,445	2,062	2,065
Television broadcasting, total	1,950	2,000	2,335	3,049	3,314	3,739
Transmissions in						
Greenlandic	141	260	271	357	667	693
Other languages	1,809	1,740	2,064	2,692	2,647	3,046

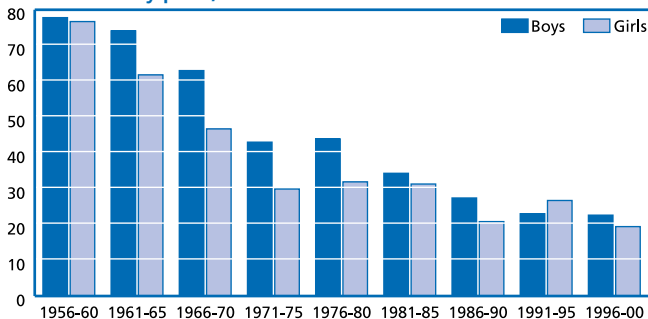
## Books published

	1996	1997	1998	1999	2000	2001
	----- NUMBER OF TITLES -----					
<b>Total</b>	<b>107</b>	<b>129</b>	<b>102</b>	<b>111</b>	<b>137</b>	<b>127</b>
Non-fiction	19	30	10	6	23	14
Fiction	6	4	11	16	18	17
Books for children	4	6	13	16	20	11
Educational books	72	75	49	67	68	74
Other books	6	14	19	6	8	11

## Nights spent at hotels, by nationality

	1995	1997	1999	2001
	----- NUMBER OF NIGHTS -----			
<b>Numbers of nights spent, total</b>	<b>157,878</b>	<b>181,054</b>	<b>200,303</b>	<b>189,463</b>
Greenland	72,770	94,236	102,948	95,007
Denmark	52,761	58,792	68,192	64,059
Sweden	902	2,180	1,245	2,055
Norway	814	1,032	1,690	1,672
Iceland	509	1,428	1,915	967
Germany	3,923	4,405	4,827	4,267
France	1,480	690	810	1,123
Italy	763	827	763	896
Netherlands	327	297	534	888
United Kingdom	833	1,722	1,973	2,503
Rest of Europe	2,349	2,589	2,916	3,501
USA	852	7,652	7,651	6,622
Japan	1,136	726	1,113	1,431
Canada	1,554	2,273	2,142	2,612
Other countries	2,070	2,205	1,584	1,597
Unknown	14,835	-	-	263

## Infant mortality per 1,000 live births



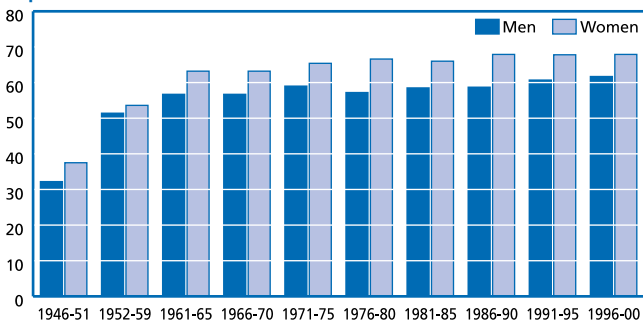
## Reported infectious diseases

	1970	1975	1980	1985	1990	1995	2000	2001
	----- NUMBER OF PERSONS -----							
Measles	153	54	45	19	3	-	-	-
German measles	560	40	216	179	1	-	-	-
Mumps	293	152	234	39	9	-	-	-
Whooping cough	2	11	5	4	1	-	-	-
Scarlet fever	30	24	77	44	15	10	...	...
Influenza	2,562	4,357	1,366	1,881	759	232	...	...
Meningitis	1	33	8	41	-	19	26	20
Hepatitis	92	97	14	20	-	2	2	1
Tuberculosis	71	31	17	16	-	49	44	104
HIV positive	-	-	-	2	8	13	7	6
AIDS	-	-	-	-	3	1	...	...
Syphilis	18	611	253	248	37	6	1	1
Gonorrhoea	8,518	11,290	8,201	7,899	1,791	286	515	707

## Legal abortions

	1981	1986	1991	1996	2001
<b>Number of abortions</b>	----- NUMBERS -----				
<b>All Greenland</b>	<b>539</b>	<b>748</b>	<b>962</b>	<b>862</b>	<b>809</b>
<b>Abortions by age of woman</b>	----- PERCENT -----				
14 - 15 years	4.5	3.3	3.1	4.6	4.7
16 - 17 years	10.2	8.4	6.1	9.9	12.2
18 - 19 years	17.6	15.8	9.6	11.0	11.2
20 - 24 years	32.5	33.8	30.6	20.4	27.7
25 - 29 years	14.7	17.4	26.7	22.9	17.1
30 - 34 years	10.9	11.8	14.9	20.7	15.6
35 - 39 years	7.2	6.7	7.0	7.7	9.8
40 - 44 years	2.2	2.4	1.8	2.4	1.6
45 - 49 years	0.2	0.4	0.3	0.5	0.1

## Expectation of life



## Consumption of alcoholic beverages

	1992	1995	1998	2001
	----- 1,000 LITERS -----			
<b>Total consumption</b>	<b>9,740</b>	<b>9,181</b>	<b>9,502</b>	<b>8,678</b>
Beer	8,617	8,456	8,701	7,807
Wine	947	576	625	712
Spirits	176	149	175	159
<b>Average consumption of alcohol</b>	----- LITERS OF 100 PERCENT -----			
Per head	10.3	9.1	9.7	9.2
Per head, over 14 years old	14.1	12.6	13.3	12.5

## Consumption of cigarettes

	1992	1995	1998	2001
	----- MIO. PIECES -----			
<b>Total consumption</b>	<b>132.2</b>	<b>100.2</b>	<b>124.9</b>	<b>112.7</b>
<b>Average consumption</b>	----- PIECES PER DAY -----			
Per head	6.6	4.9	6.1	5.5
Per head, over 14 years old	9.0	6.8	8.4	7.5

## Residential buildings in 2001, by municipality

	Dwellings completed	Building stock	Need for houses	Covering-percentage	Persons per house	
					City	Settlement
<b>Greenland, total</b>	<b>287</b>	<b>20,587</b>	<b>25,754</b>	<b>79.9</b>	<b>2.5</b>	<b>2.7</b>
Nanortalik	19	999	1,115	89.6	2.4	2.4
Qaqortoq	16	1,350	1,615	83.6	2.3	2.1
Narsaq	2	806	951	84.8	2.2	5.1
Paamiut	-	1,067	970	110.0	1.7	1.6
Nuuk	191	5,241	7,198	72.8	2.4	2.2
Maniitsoq	14	1,471	1,703	86.4	2.3	2.5
Sisimiut	3	1,898	2,442	77.7	2.6	2.5
Kangaatsiaq	1	444	549	80.9	2.8	3.4
Aasiaat	-	1,267	1,620	78.2	2.7	2.0
Qasigiannuit	-	620	659	94.1	2.3	2.3
Ilulissat	29	1,637	2,223	73.6	2.6	2.5
Qeqertarsuaq	-	427	465	91.8	2.4	2.1
Uummannaq	2	1,020	1,136	89.8	2.5	2.6
Upernavik	-	778	1,163	66.9	3.0	3.9
Qaanaaq	2	350	486	72.0	2.8	1.8
Ammassalik	4	987	1,250	79.0	3.2	2.1
Illoqqortoormiut	4	225	209	107.7	2.9	0.5

\* The municipality of Sisimiut does not include the settlement Kangerlussuaq.

\* Building stock and need for houses on January 1st 2002.

\* Persons per house Januar 1st 2001.

## Reported criminal offences

	1980	1990	1999	2000	2001
<b>Offences, total</b>	<b>6,197</b>	<b>7,452</b>	<b>6,809</b>	<b>7,072</b>	<b>7,309</b>
Sexual offences, total	119	325	386	441	460
Rape and attempted rape	-	162	149	178	191
Incest	119	138	220	250	240
Other sexual offences	-	25	17	13	29
Crimes of violence, total	425	508	641	691	812
Assault	358	415	595	660	772
Homicide and attempted homicide	29	59	27	24	29
Other offences against life or body	38	34	19	7	11
Offences against property, total	4,113	4,425	3,638	3,789	3,768
Housebreaking	1,304	1,213	875	789	787
Theft	1,736	1,846	1,738	1,859	1,825
Fraud, embezzlement, etc.	146	416	186	231	204
Malicious damage	754	832	769	846	839
Other offences against property	173	118	70	64	113
Other offences, total	299	401	502	509	546
Offences against special legislation of this selling and smuggling of narcotics	1,241	1,793	1,642	1,642	1,723
	60	419	480	517	499
Number of charged persons aged 14 years and under	4,826	4,143	3,597	3,769	4,786
	282	517	176	331	226

## Recidivist rates of convicted persons, by year of release and age

	1991			1995		
	1-3 years	4-5 years	1-5 years	1-3 years	4-5 years	1-5 years
	----- PERCENT -----					
<b>Total</b>	<b>40.0</b>	<b>8.6</b>	<b>48.5</b>	<b>36.8</b>	<b>10.8</b>	<b>47.7</b>
15-19 years	54.4	6.6	61.1	54.5	10.5	65.1
20-24 years	51.6	9.1	60.6	44.1	11.8	55.9
25-29 years	42.2	11.5	53.6	40.6	12.4	52.9
30-34 years	38.0	9.4	47.4	34.9	13.4	48.4
35-39 years	27.8	8.3	36.1	34.5	8.4	42.9
40-44 years	23.9	4.4	28.3	30.6	8.1	38.7
45-49 years	13.3	4.8	18.1	10.3	9.0	19.2
50-54 years	16.3	2.0	18.4	12.3	7.0	19.3
55-60 years	7.4	3.7	11.1	6.1	-	6.1
60 years and more	18.2	-	18.2	8.3	-	8.3

## Mean temperature in 2001, selected cities

	Qaqortoq	Nuuk	Kangerlussuaq	Ilulissat
	----- CELSIUS -----			
January	-6.1	-8.9	-19.1	-14.8
February	-5.6	-8.0	-19.8	-15.8
March	-1.8	-5.3	-16.8	-13.2
April	1.4	-1.6	-5.9	-6.0
May	3.4	1.4	2.3	-1.5
June	7.3	6.8	9.4	8.7
July	6.9	5.8	11.7	5.1
August	9.1	7.7	10.3	8.8
September	7.6	4.9	4.9	3.2
October	2.6	1.1	-2.7	-2.4
November	-1.4	-2.8	-9.8	-7.9
December	-1.5	-2.8	-16.0	-8.7

## Precipitation in 2001, selected cities

	Qaqortoq	Nuuk	Kangerlussuaq	Ilulissat
	----- MM -----			
January	41	44	16	17
February	91	48	6	26
March	7	2	5	18
April	59	25	17	20
May	30	75	26	40
June	89	357	17	33
July	42	35	20	4
August	148	185	10	15
September	136	479	12	55
October	177	87	8	21
November	288	140	37	47
December	36	454	14	14







## The world's largest island

Geographical Greenland is part of the Northamerican continent, geopolitical a part of Europe. Greenland is a mountainous country and the world's largest island with a total area of 2,415,100 sq. km. Of this 85 percent is covered with ice, while the rest is free of ice. The temperature of the warmest month does not exceed 10 degrees celsius. Generally speaking, the further north, the colder, drier and less windy it becomes. July is warmest month, while February and March are the coldest.

### **Largest distances:**

North-South: 2,670 km. East-West; 1,050 km. Coastline: 39,000 km  
Highest point: Gunnbjørns fjeld 3,733 m