

Population

1. Size and growth

Size and growth

There are 56.282 persons living in Greenland (by January 1st 2014). This has been the size of the population +/- 1000 persons during the past 20 years. From 2005 the population started a slow declining tendency, which is expected to continue in the coming years.

Summary table 1.1. Population by place of birth

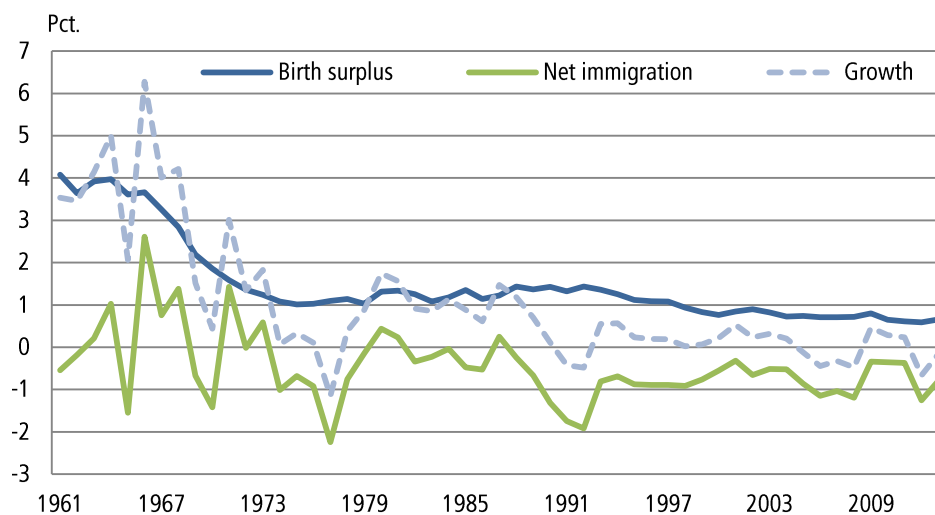
	1980	1985	1990	1995	2000	2005	2010	2014
Total	49.647	52.791	55.403	55.732	56.110	56.972	56.452	56.282
Greenland	40.959	43.602	46.151	48.412	49.358	50.275	50.226	50.157
Outside Greenland	8.688	9.189	9.252	7.320	6.752	6.697	6.226	6.125

Source: Statistics Greenland, <http://bank.stat.gl/beest1>

The size of the population and growth over time is explained by changes in the number of live birth, deaths, immigrants and emigrant. In figure 1.1 you can see the interaction between growth, birth surplus and net migration. Typically the birth surplus and net emigration contributes to a positive growth.

In figure 1.1 population growth, birth surplus and net emigrations is shown. Throughout the whole period there has been a stable birth surplus and volatile migrations.

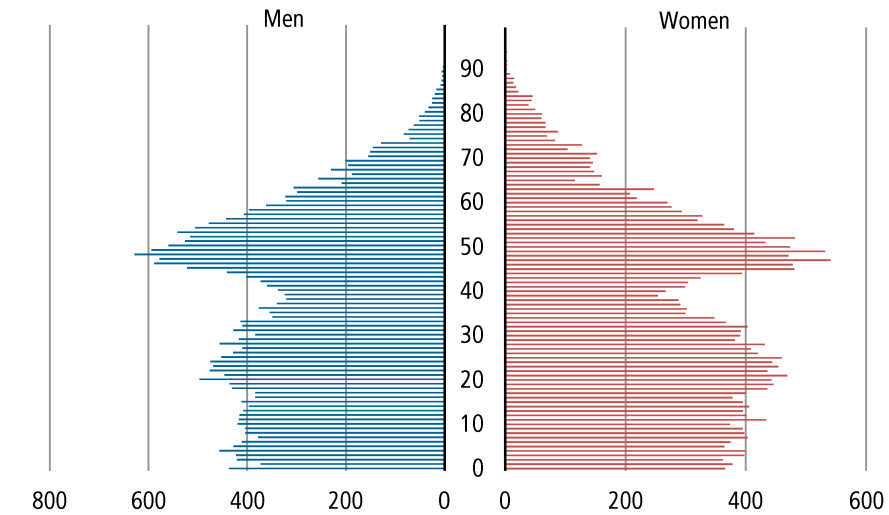
Figure 1.1. Population growth, birth surplus and net emigrations. Total population



Source: Statistics Greenland, <http://bank.stat.gl/beesat1>

The birth surplus was extremely high in the early 1960s due to a very high fertility level. Within a few years the fertility level was halved, and the birth cohorts was equally halved. We talk of ‘the big cohorts’ from the 1960s. These cohorts were twice as big as cohorts 10 years prior and after. The age-distribution over the past 50 years has been heavily influenced by these cohorts, and is still very visual in a population pyramid. In 2014 the cohorts are between 44 and 54 years old – and in ten years they will be about to retire.

Figure 1.2. Population pyramid 2014. Total population



Source: Statistics Greenland, <http://bank.stat.gl/beest1>

2. Structure

Gender, age and marital status

Summary table 2.1. Population by gender 1980-2014

	1980	1985	1990	1995	2000	2005	2010	2014
Total	49.785	52.955	55.567	55.732	56.110	56.972	56.452	56.282
Male	27.028	28.778	30.063	29.706	29.982	30.322	29.936	29.730
Female	22.757	24.177	25.504	26.026	26.128	26.650	26.516	26.552
	percent							
Male	54,3	54,3	54,1	53,3	53,4	53,2	53,0	52,8
Female	45,7	45,7	45,9	46,7	46,6	46,8	47,0	47,2

Source: Statistics Greenland <http://bank.stat.gl/beest1>

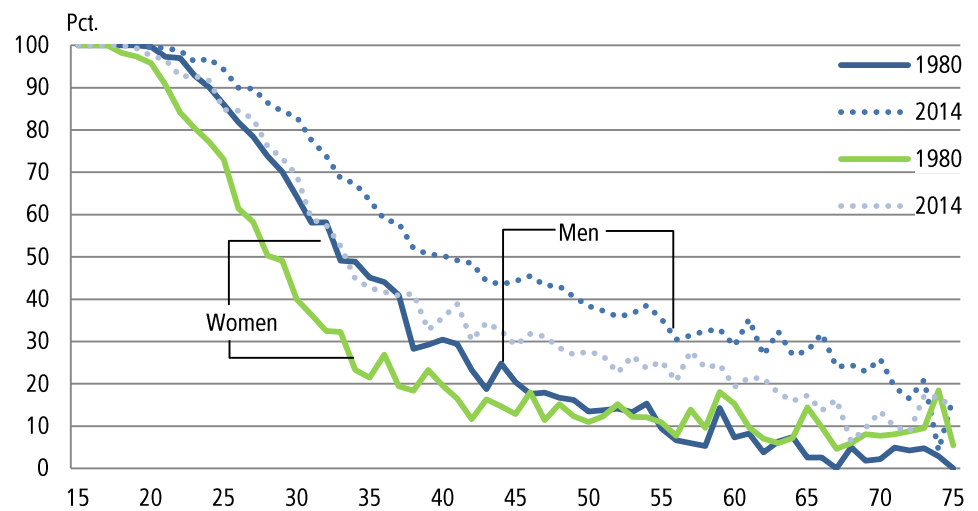
There are more males than females living in Greenland as 53 percent of total population are males. Generally there is a surplus of men in the working ages. Only in the oldest age groups women outnumber men. This is primary due to a group of men, born outside Greenland. This group, attracted by work, consist of double as many men as women.

The Greenlandic population is young. 7 percent of the population is over 65 years and less than 1 percent has turned 80 years.

The dependency ratio shows the ratio between people out of the working ages and the number of people in the active ages.

When setting the working ages to 20-64 years, the 'dependency ratio' by January 1st 2014 is calculated to 0.57. This mean, that for every 100 persons in the working ages, 57 persons, needs support. A view back in time shows, that the 'dependency ratio' in 1979 was 0.89, that is a much higher ratio than today. Ever since the mid 1990s the ratio has been around 65 per 100 in work. This, by the way, is pretty close to the world average when the working ages are counted as 15- 64 years. (see 2014 World Population Data Sheet Population Reference Bureau - www.prb.org)

Figure 2.1. Ratio of never married, born i n Greenland by age and gender 1980 and 2014



Source: Statistics Greenland, <http://bank.stat.gl/beest5>

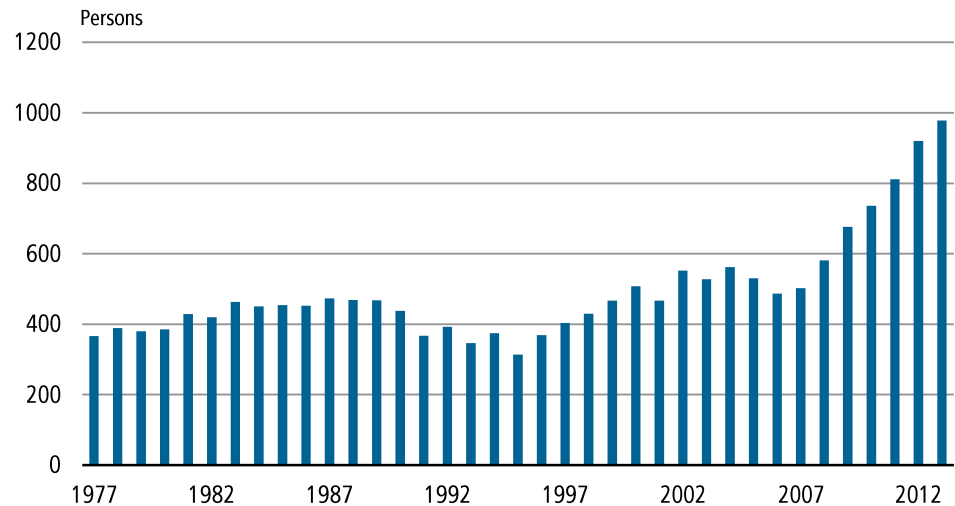
shows that over the past 30 years it has become more common to stay unmarried. This is even more outspoken for men than women.

3. Place of birth and citizenship

Place of birth and citizenship

Until a few years ago less than 1 percent of the population had foreign citizenship. As can be seen in figure 3.1 this is changing and only in the last 5 years the number of foreign citizens has risen by 83 percent.

Figure 3.1. Foreign citizens. 1977-2014



Source: Statistics Greenland, <http://bank.stat.gl/beest6>

We often split the population by birthplace with the categories 'born in Greenland' and 'born outside Greenland' as average considerations otherwise will hide important demographic differences between the groups. At the same time the proportion of people born outside Greenland has decreased from 18 percent in 1980 to 10,9 percent in 2014.

In summary table 3.1 the population has been tabulated by persons own 'place of birth' as well as parents 'place of birth'. From the table it is seen that 50,157 or 89 percent of the population was born in Greenland.

Summary table 3.1. Population by own and parents place of birth. 2014

Place of birth	Total	Both parents birthplace			One parent born in Greenland/ Second parent	
		Greenland	OutsideGreenland		Greenland	unknown
			nland	unknown		
Total	56.282	34.558	761	11.295	9.387	281
Greenland	50.157	34.129	332	6.856	8.744	96
Outside Greenland	6.125	429	429	4.439	643	185

Source: Statistics Greenland, <http://bank.stat.gl/beeaao3>

In summary table 3.1 the population additionally has been calculated by the parents birthplace. It is seen, that 43.797 (34.129 + 9.387+281) equal to 78 percent of the population has at least one parent born in Greenland. Our archives do not hold information on the parents birthplace for 1/4 of the population. This is either because the parents can't be found in CPR (Danish register on persons), or because the live outside Denmark or Greenland or because they died prior to 1967, when the system was introduced.

Summary table 3.2. Population with strong family ties to Greenland. 2014

Place of birth	Total	Both parents birthplace		One parent born in Greenland
		Greenland	Unknown	Second parent born outside Greenland
Total	51.082	34.558	6.856	9.668
Greenland	49.825	34.129	6.856	8.840
Outside Greenland	1.257	429	0	828

Source: Statistics Greenland, <http://bank.stat.gl/beeaa03>

If at least one parent was born in Greenland, the person is said to have strong family ties to Greenland. This includes the persons, where both parents' birthplaces are unknown, if the person in question was born in Greenland. With this definition 51,082 persons has strong family ties to Greenland by 2014. This represents 90 percent of the total population. There is almost no difference in the proportion of people who have strong family ties (90 percent) compared to the proportion of persons born in Greenland (89 percent).

4. Towns and Settlements

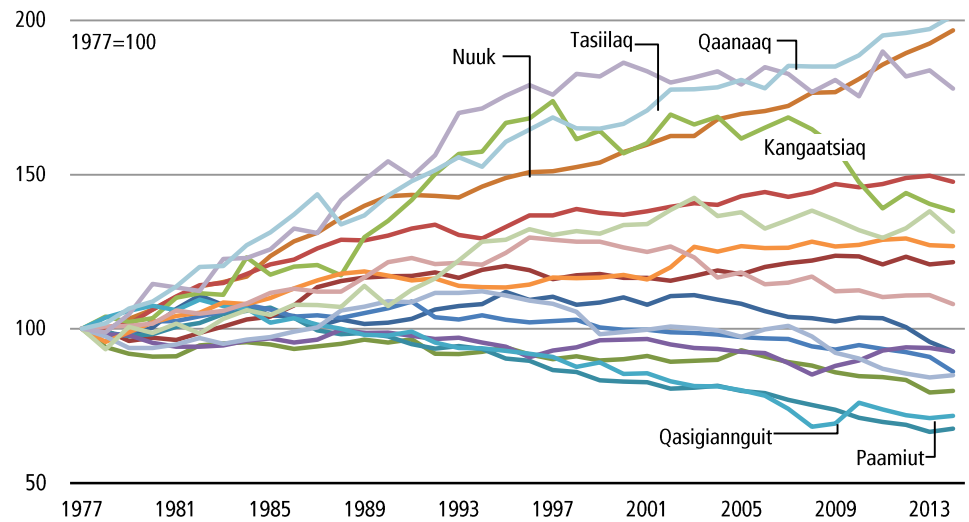
Towns and Settlements

According to Asiaqs' register of localities there are 89 active localities in Greenland by October 23rd 2014. A locality can be a town(17), a settlement (54), farm(5), station(5)...

Until the municipal amalgamation January 1st 2009, there was only one city in each municipality, in which municipal administration was found. Following the merger of municipalities we call the old municipalities for districts. A municipality consists of several towns and settlements.

Through the 1960s the population grew rapidly in the towns. The towns absorbed both population growth and the exodus from the settlements. This trend continued over the last 30 years as the population in towns continues to rise while it declines in the settlements. Figure 4.1 shows total population in the towns 1979-2014. The towns in Nuuk, Qaanaaq and Tasiilaq have almost doubled their population during the period, while the population in Paamiut and Qasigiannuit has been reduced by 25 percent.

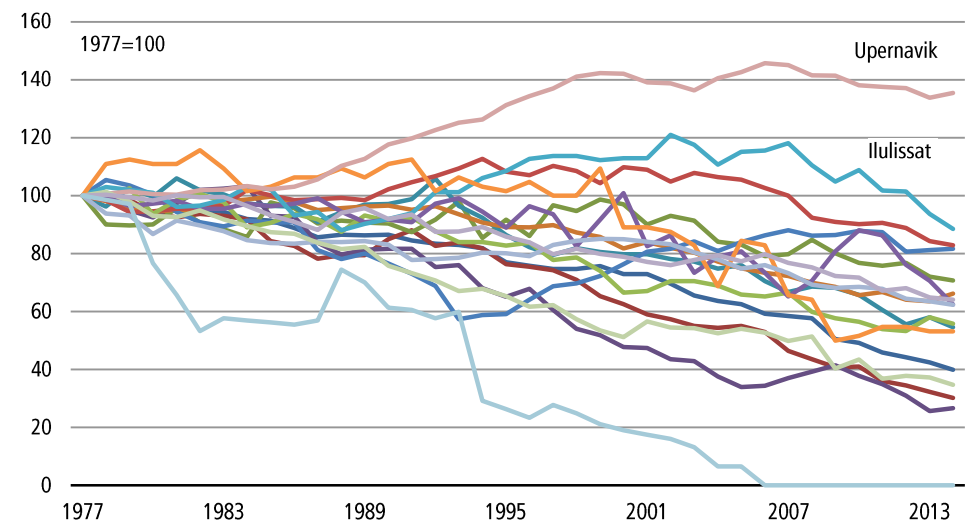
Figure 4.1. Population trends in towns 1077-2014



Source: Statistics Greenland, <http://bank.stat.gl/beest3>

Only the settlements in Upernavik and Ilulissat has experienced an increasing population. A number of settlements have been abandoned – partly or totally.

Figure 4.2. Population trends in settlements 1977-2014



Source: Statistics Greenland, <http://bank.stat.gl/beest3>

5. Vital statistics

Fertility

821 live born children were born in Greenland in 2013. Of these 762 were born by mothers born in Greenland themselves, and 59 were born by mothers from abroad.

The annual number of live born can be decomposed into the size of the female population, their age-distribution and their age-specific fertility rates. Fertility often compares by a number of indicators, some shown in summary table 5.1.

Summary table 5.1. Fertility indicators 2013

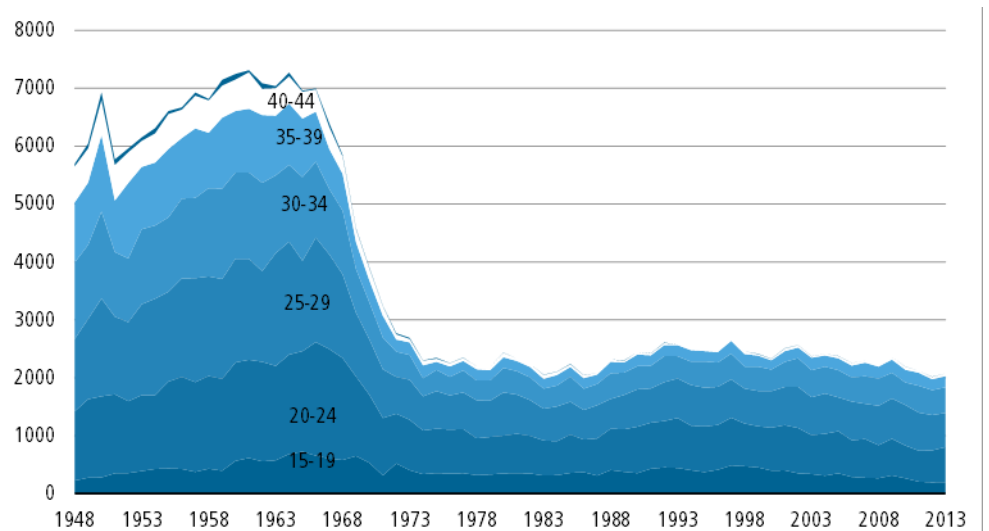
	Total			Mothers born in Greenland			Born outside Greenland		
	1993	2003	2013	1993	2003	2013	1993	2003	2013
Liveborn	1.180	879	821	1.098	786	762	82	93	59
Fertilityrate	21,3	15,5	14,6	23,0	15,7	15,2	11,0	13,8	9,5
General fertility	83,0	61,4	59,0	86,9	60,5	60,2	52,0	69,7	46,4
Total fertility	2,587	2,379	2,049	2,660	2,351	2,077	1,827	2,038	1,328
Gross reproduction	1,259	1,158	0,997	1,295	1,145	1,011	0,890	0,992	0,647
Net reproduction	1,214	1,088	0,980

Source: Statistics Greenland, <http://bank.stat.gl/beebbsf2>

The fertility-indicators give an overview of fertility and the age-specific fertility rates a more detailed picture. In figure 5.1 development in the age-specific rates are shown for women, born in Greenland.

The fertility level dropped very sharply in the late 1960s and early 1970s. From 1975 till today, the total fertility rate (the number of children a woman would get if she gives birth in accordance with the annual fertility rates) fluctuated between approximately 2.0 and 2.6 children.

Figure 5.1. Total fertility 1948-2013, per 1000 women born in Greenland



Source: Statistics Greenland, <http://bank.stat.gl/beebbsf1>

Over the last 10 years a decline in fertility for women under 25 years can be seen. The total fertility rate is now so low that the population can not reproduce itself.

6. Mortality

Mortality

In summary table 6.1. the main mortality indicators for 2011 – 2013 can be found. 450 persons died in 2013.

Life expectancy at 0-year equals how old a newborn child can expect to be with the death rates that exist in the different age groups in a given period. Life expectancy for persons born in Greenland has risen by 14.3 years for males and 15.4 years for women in the period from 1954-1958 to 2003 - 2007.

Summary table 6.1. Mortality indicators

	Total			Males			Females		
	2011	2012	2013	2011	2012	2013	2011	2012	2013
Deaths	476	459	450	258	270	270	218	189	180
Non natural deaths ¹	69	52	17
Mortality rate	8,5	8,2	8,0	8,7	9,1	9,1	8,2	7,2	6,8
Life expectancy ²	68,2	68,5	68,6	72,9	73,3	73,7
Life expectancy ² (Born in Grl.)	66,9	67,3	67,3	72,5	72,9	73,3

Source: Statistics Greenland, The National Board of Health

1) See <http://bank.stat.gl/SUELDM1>

2) Calculated for 5-year periods. 2012=2008-2012

Summary table 6.2. Life expectancy newborn. Persons born in Greenland

	1978-1982	1983-1987	1988-1992	1993-1997	1998-2002	2003-2007	2008-2012
Males	57,4	58,4	59,7	62,1	63,0	65,5	67,3
Females	66,4	66,6	68,1	67,6	69,3	71,4	73,3

Source: Statistics Greenland, <http://bank.stat.gl/beedt>

Both men and women born in Greenland have shorter life span than those from countries in the Western world. There are two main reasons: Greenland still has a relatively high infant mortality and second high mortality due to accidents and suicides. Deaths due to accident or suicide typically occurs among young men aged 15-35 years. Like deaths among infants these contributes to a significant number of life years lost, far more than the rising number of deaths from cancer and heart disease, which typically occurs later in life.

In Summary table 6.3 the difference between men and women's age-specific mortality rates are shown.

Summary table 6.3. Death pr 1000. Persons born in Greenland

	Males						Females					
	2009	2010	2011	2012	2013	2009-2013	2009	2010	2011	2012	2013	2009-2013
0	2,3	15,6	13,8	10,0	12,3	10,8	5,1	0,0	7,6	7,9	5,3	5,1
1-4	1,3	1,3	0,0	0,6	1,2	0,8	0,7	0,7	0,0	0,0	0,6	0,4
5-9	1,0	0,0	0,0	0,0	0,0	0,2	0,0	0,0	0,0	0,5	0,0	0,1
10-14	1,4	0,9	0,5	0,5	0,0	0,7	1,4	0,5	0,5	0,0	1,0	0,7
15-19	3,6	2,7	6,3	2,3	3,8	3,7	1,8	3,6	2,3	0,9	3,4	2,4
20-24	2,4	8,1	3,0	3,8	4,2	4,3	1,0	2,4	1,3	1,3	0,9	1,4
25-29	6,3	2,8	2,4	3,3	2,8	3,4	0,6	0,6	1,0	0,0	0,0	0,4
30-34	3,7	7,1	2,1	2,5	2,0	3,3	1,6	0,7	2,3	1,7	1,1	1,5
35-39	2,0	6,6	3,4	2,3	1,7	3,1	1,5	3,2	3,5	1,4	2,8	2,5
40-44	2,8	6,2	2,8	5,4	3,5	4,1	0,9	2,8	1,9	2,1	2,4	2,0
45-49	3,9	10,0	7,6	3,4	5,8	6,0	7,2	4,8	6,4	2,0	2,4	4,5
50-54	10,1	9,1	7,5	5,8	8,0	7,9	5,8	9,1	2,1	4,9	4,2	5,0
55-59	19,8	17,3	9,7	8,2	17,1	13,9	18,5	11,0	10,0	10,2	5,2	10,5
60-64	18,2	22,0	17,5	20,5	20,0	19,6	21,5	16,2	24,2	16,6	10,6	17,6
65-69	35,0	51,3	28,6	42,5	27,6	36,2	28,7	36,3	34,3	20,4	33,7	30,6
70-74	69,5	68,3	59,6	72,8	47,3	62,7	41,5	38,5	59,8	57,6	39,7	47,5
75-79	107,4	121,3	108,5	116,5	123,0	115,5	78,2	72,1	83,1	71,0	79,9	76,9
80-84	168,4	127,9	183,3	151,5	136,2	153,0	125,3	141,5	142,5	137,0	100,2	129,0
85-89	378,4	133,3	188,7	296,3	147,1	217,9	103,1	259,3	125,0	215,8	239,4	192,2

Source: Statistics Greenland, <http://bank.stat.gl/beebbdm1>

7. Internal migrations

Internal migrations

In Greenland internal migration has a significant impact on the regional population size, sex and age distribution. The impact is much greater than the effect of births and deaths and it affects the composition of the population both the locality of migration and the one of removal.

22,701 domestic movements were recorded in 2013. Most movements were within the same locality.

Summary table 7.1. Internal migrations

	2003	2004	2005	2006	2007	2008	2009	2010	2011	2012	2013
Total	18.232	18.739	20.413	20.781	21.766	20.639	21.066	22.313	21.941	21.698	22.701
same town	10.781	11.217	12.250	12.490	13.130	12.040	12.644	13.755	13.200	13.129	14.000
same settlement	1.183	960	1.294	1.271	1.299	1.252	1.112	1.215	1.316	1.191	1.219
between towns	3.882	4.153	4.361	4.428	4.561	4.439	4.548	4.553	4.507	4.440	4.672
between settlem.	308	288	279	302	312	406	337	346	370	418	332
from settl. to town	1.099	1.090	1.115	1.240	1.367	1.323	1.266	1.325	1.392	1.359	1.272
from town to settl.	878	950	1.047	999	1.041	1.057	1.096	1.070	1.124	1.079	1.150
Others	101	81	67	51	56	122	63	49	32	82	56

Source: Statistics Greenland, <http://bank.stat.gl/beebaf2b>

8. Migrations

Migrations

Since the 1970s, net migration has varied greatly from year to year. With few exceptions, emigration generally exceeds immigration. In the early 1990s a significant decline in immigration led to a large net outflow, so great, that the birth rate could not prevent a decline in the total population. From 2005 to 2008 net emigration was markedly higher than in previous years, especially among ‘persons born in Greenland’.

Summary table 8.1. Netimmigration by place of birth. 2001-2013

	2003	2004	2005	2006	2007	2008	2009	2010	2011	2012	2013
	Total										
Net immigrations	-345	-236	-448	-644	-566	-639	-189	-160	-159	-709	-447
Immigrations	2.388	2.482	2.514	2.404	2.417	2.536	2.551	2.491	2.283	2.191	2.066
Emigrations	2.733	2.718	2.962	3.048	2.983	3.175	2.740	2.651	2.442	2.900	2.513
	Born Greenland										
Net immigrations	-315	-191	-382	-468	-507	-653	-278	-291	-310	-612	-340
Immigrations	826	923	870	890	886	907	1.076	1.043	905	871	967
Emigrations	1.141	1.114	1.252	1.358	1.393	1.560	1.354	1.334	1.215	1.483	1.307
	Born outside Greenland										
Net immigrations	-30	-45	-66	-176	-59	14	89	131	151	-97	-107
Immigrations	1.562	1.559	1.644	1.514	1.531	1.629	1.475	1.448	1.378	1.320	1.099
Emigrations	1.592	1.604	1.710	1.690	1.590	1.615	1.386	1.317	1.227	1.417	1.206

Source: Statistics Greenland, <http://bank.stat.gl/beebbiu2>

More than nine of 10 migrations are between Denmark and Greenland. The remaining migrations are primarily to or from the other Scandinavian countries.

9. Population forecast

Population forecast

Population projections provide estimates of the future size, gender and age composition of the population. It is important to stress that population projections are not accurate predictions about the future, but are the result of calculations determined by assumptions about births, deaths and migration. If our assumptions are not met, the actual developments will deviate from the projection.

Our assumption on fertility and mortality are based on experiences from the period 2009 – 2013, while assumptions on migration are based on the latest 10-year period.

Summary table 9.1. Population 2015-2023

	2015	2016	2017	2018	2019	2020	2021	2022	2023
Total	56.231	56.172	56.126	56.065	55.992	55.908	55.828	55.745	55.647
Persons born in Greenland	50.100	50.034	49.965	49.906	49.834	49.760	49.684	49.592	49.493
Persons born outside Greenland	6.131	6.138	6.161	6.159	6.158	6.148	6.144	6.153	6.154

Source: Statistics Greenland, <http://bank.stat.gl/BEEPROG>

I summary table 9.1 and [table 5](#) results from the projections can be seen. For more details – visit <http://bank.stat.gl/BEEPROG> . The forecast is calculated on both ‘persons born in Greenland’ and those ‘born outside Greenland’. The two subpopulations evolve in different directions. The persons born in Greenland, are expected to decrease steadily from 50,157 persons in 2014 to 49,493 persons in 2023. The ‘persons born outside Greenland’ are expected to increase from 6,125 persons in 2014 to 6,154 in 2023. The total population will keep status quo over the next decade

Population and Population growth

Table 1. Population and Population growth

	Place of birth			Growth by place of birth					
	Total	Greenland	Outside Greenland	Total	Greenland	Outside Greenland			
	Count			Growth			Growth in percent		
1901	11.893	11.621	272
1911	13.459	13.075	384	157	145	112	1,2	1,2	3,5
1921	14.355	14.081	274	90	101	-110	0,6	0,7	-3,3
1930	16.901	16.488	413	283	267	139	1,8	1,8	4,7
1946	21.412	20.939	473	296	292	60	1,6	1,6	0,9
1951	23.642	22.581	1.061	446	328	588	2,0	1,5	17,5
1956	27.101	25.234	1.867	692	531	806	2,8	2,4	12,0
1961	33.140	30.378	2.762	1.208	1.029	895	4,2	4,1	8,2
1962	34.312	31.304	3.008	1.172	926	246	3,5	3,0	8,0
1963	35.499	32.288	3.211	1.187	984	203	3,5	3,1	6,7
1964	36.967	33.406	3.561	1.468	1.118	350	4,1	3,5	10,9
1965	38.815	34.711	4.104	1.848	1.305	543	5,0	3,9	15,2
1966	39.615	35.132	4.483	800	421	379	2,1	1,2	9,2
1967	42.102	36.380	5.722	2.487	1.248	1.239	6,3	3,6	27,6
1968	43.792	37.372	6.420	1.690	992	698	4,0	2,7	12,2
1969	45.639	38.378	7.261	1.847	1.006	841	4,2	2,7	13,1
1970	46.331	38.914	7.417	692	536	156	1,5	1,3	2,1
1971	46.532	38.912	7.620	201	2	203	0,4	0,0	2,7
1972	47.935	39.752	8.183	1.403	840	563	3,0	2,2	2,2
1973	48.581	40.089	8.492	646	337	309	1,3	0,8	3,8
1974	49.468	40.091	9.377	887	2	885	1,8	0,0	10,4
1975	49.502	39.979	9.523	34	-112	146	0,1	-0,3	1,6
1976	49.666	40.390	9.276	164	411	-247	0,3	1,0	-2,6
1977	49.719	40.601	9.118	53	211	-158	0,1	0,5	-1,7
1978	49.148	40.609	8.539	-571	8	-579	-1,1	0,0	-6,4
1979	49.338	40.775	8.563	190	166	24	0,4	0,4	0,3
1980	49.773	40.947	8.826	435	172	263	0,9	0,4	3,1
1981	50.643	41.459	9.184	870	512	358	1,7	1,3	4,1
1982	51.435	42.156	9.279	792	697	95	1,6	1,7	1,0
1983	51.903	42.669	9.234	468	513	-45	0,9	1,2	-0,5
1984	52.347	43.130	9.217	444	461	-17	0,9	1,1	-0,2
1985	52.940	43.587	9.353	593	457	136	1,1	1,1	1,5
1986	53.406	44.053	9.353	466	466	0	0,9	1,1	0,0
1987	53.733	44.430	9.303	327	377	-50	0,6	0,9	-0,5
1988	54.524	44.952	9.572	791	522	269	1,5	1,2	2,9
1989	55.171	45.629	9.542	647	677	-30	1,2	1,5	-0,3
1990	55.558	46.142	9.416	387	513	-126	0,7	1,1	-1,3
1991	55.620	46.778	8.842	62	636	-574	0,1	1,4	-6,1
1992	55.385	47.184	8.201	-235	406	-641	-0,4	0,9	-7,2
1993	55.117	47.558	7.559	-268	374	-642	-0,5	0,8	-7,8
1994	55.419	48.029	7.390	302	471	-169	0,5	1,0	-2,2
1995	55.732	48.412	7.320	313	383	-70	0,6	0,8	-0,9
1996	55.863	48.679	7.184	131	267	-136	0,2	0,6	-1,9
1997	55.971	48.882	7.089	108	203	-95	0,2	0,4	-1,3
1998	56.076	49.117	6.959	105	235	-130	0,2	0,5	-1,8
1999	56.087	49.281	6.806	11	164	-153	0,0	0,3	-2,2
2000	56.124	49.369	6.755	37	88	-51	0,1	0,2	-0,7
2001	56.245	49.623	6.622	121	254	-133	0,2	0,5	-2,0
2002	56.542	49.796	6.746	297	173	124	0,5	0,3	1,9
2003	56.676	49.941	6.735	134	145	-11	0,2	0,3	-0,2
2004	56.854	50.096	6.758	178	155	23	0,3	0,3	0,3
2005	56.969	50.283	6.686	115	187	-72	0,2	0,4	-1,1
2006	56.901	50.397	6.504	-68	114	-182	-0,1	0,2	-2,7
2007	56.648	50.366	6.282	-253	-31	-222	-0,4	-0,1	-3,4
2008	56.462	50.270	6.192	-186	-96	-90	-0,3	-0,2	-1,4

2009	56.194	50.023	6.171	-268	-247	-21	-0,5	-0,5	-0,3
2010	56.452	50.226	6.226	258	203	55	0,5	0,4	0,9
2011	56.615	50.321	6.294	163	95	68	0,3	0,2	1,1
2012	56.749	50.340	6.409	134	19	115	0,2	0,4	1,8
2013	56.370	50.101	6.269	-379	-239	-140	-0,7	-0,5	-2,2
2014	56.282	50.157	6.125	-88	56	-144	-0,2	0,1	-2,4

<http://bank.stat.gl/beesat1>

Notes:

1) 1901-30: "Natives". 1945-51: "Persons under greenlandic jurisdiction".

2) Northgreenland, in 1930 271 persons, all of whom born in Greenland.

3) The large fluktuations in growth was due to technical issues at registration

4) Includes from 1966 and onward the civil part of Kangerlussuaq (Sdr. Strømfjord). 579 persons were added, all except 5 born outside Greenland.

Source: Statsministeriets Grønlandsafdeling, Statistics Denmark and Statistics Greenland

Source: Statsministeriets Grønlandsafdeling, Danmarks Statistik og Grønlands Statistik

Vital statistics

Table 2. Vital Statistics

	Liveborn		Death		Birth-surplus	Net immigration (incl. corrections)			Growth Total
	Mother born in Greenland	Total	Born in Greenland	Total		Born in Greenland	Born outside Greenland	Total	
1950	1.110	1.129	537	539	590	-113	122	9	599
1951	973	999	548	550	449	-142	210	68	517
1952	996	1.034	473	475	559	-96	141	45	604
1953	1.058	1.109	392	398	711	-213	41	-172	539
1954	1.103	1.136	384	388	748	-113	255	142	890
1955	1.179	1.234	371	375	859	-127	177	50	909
1956	1.235	1.293	347	351	942	-3	258	255	1.197
1957	1.303	1.361	329	337	1.024	37	165	202	1.226
1958	1.335	1.410	284	290	1.120	-201	178	-23	1.097
1959	1.412	1.491	278	285	1.206	-181	209	28	1.234
1960	1.496	1.586	247	256	1.330	-164	119	-45	1.285
1961	1.548	1.644	284	292	1.352	-338	158	-180	1.172
1962	1.489	1.610	344	361	1.249	-161	99	-62	1.187
1963	1.560	1.671	270	279	1.392	-172	248	76	1.468
1964	1.674	1.797	321	329	1.468	-48	428	380	1.848
1965	1.596	1.738	327	337	1.401	-848	247	-601	800
1966	1.608	1.781	318	329	1.452	-42	1.077	1.035	2.487
1967	1.507	1.685	305	314	1.371	-210	529	319	1.690
1968	1.418	1.576	319	333	1.243	-93	697	604	1.847
1969	1.151	1.310	293	311	999	-322	15	-307	692
1970	999	1.144	268	283	861	-733	73	-660	201
1971	851	1.028	268	289	739	257	407	664	1.403
1972	770	948	281	295	653	-152	145	-7	646
1973	706	940	320	339	601	-384	670	286	887
1974	638	866	312	332	534	-438	-62	-500	34
1975	671	815	299	313	502	39	-430	-391	164
1976	715	859	327	348	511	-177	-281	-458	53
1977	783	918	307	373	545	-468	-667	-1.135	-571
1978	717	870	295	309	561	-256	-110	-366	190
1979	794	900	375	393	507	-247	185	-62	435
1980	913	1.034	362	380	654	-39	264	225	870
1981	931	1.056	357	381	675	123	1	124	792
1982	952	1.052	386	408	644	-53	-120	-173	468
1983	890	994	407	433	561	-22	-85	-107	444
1984	916	1.054	407	439	615	-52	30	-22	593
1985	1.032	1.152	415	435	717	-151	-87	-238	466
1986	952	1.055	420	445	610	-155	-142	-297	327
1987	999	1.104	418	445	659	-59	205	146	791
1988	1.104	1.213	413	432	781	-14	-118	-132	647
1989	1.107	1.210	429	455	755	-165	-203	-368	387
1990	1.144	1.258	434	467	791	-74	-655	-729	62
1991	1.102	1.192	409	458	734	.	.	-969	-235
1992	1.124	1.237	420	441	796	-330	-734	-1.064	-268
1993	1.098	1.180	416	432	748	-333	-194	-527	302
1994	1.025	1.139	415	445	694	-308	-46	-354	313
1995	1.012	1.101	453	480	621	-366	-100	-466	131
1996	956	1.051	411	444	607	-419	-64	-483	108
1997	1.023	1.095	466	492	603	-373	-28	-401	105
1998	901	980	434	457	523	-419	-96	-515	-52
1999	880	945	443	479	466	-290	-26	-316	83
2000	807	879	429	450	429	-158	-47	-205	138
2001	856	942	434	466	476	-234	-13	-247	297
2002	877	954	417	446	508	-357	69	-288	134
2003	786	879	388	411	468	-315	-30	-345	178
2004	809	892	440	479	413	-191	-45	-236	115
2005	794	886	446	465	421	-382	-66	-448	-68

2006	772	842	409	440	402	-468	-176	-644	-253
2007	755	853	429	452	401	-507	-59	-566	-186
2008	763	834	401	428	406	-653	14	-639	-268
2009	816	895	417	444	451	-278	89	-189	258
2010	774	869	471	504	365	-291	131	-160	163
2011	747	821	440	470	351	-310	151	-159	134
2012	732	790	429	459	331	-612	-97	-709	-379
2013	761	820	418	444	376	-340	-107	-447	-88

Source: Statistics Greenland (<http://bank.stat.gl/beesat2>)

Notes:

1) The large fluctuations in growth is caused by technical issues at registration.

Source: Statsministeriets Grønlandsafdeling, Statistics Denmark and Statistics Greenland

Population in municipalities, districts, towns and settlements 2014

Table 3. Population in municipalities, districts, towns and settlements 2014

	0-6	7-16	17-24	25-64	65+	l alt
Total	5.594	8.019	7.142	31.285	4.242	56.282
Towns	4.744	6.712	6.133	26.992	3.616	48.197
Settlements ++	826	1.280	967	3.997	608	7.678
	Municipal.					
Kommune Kujalleq	690	994	914	3.739	751	7.088
Towns	588	847	825	3.177	619	6.056
Settlements ++	78	120	69	488	121	876
Kommuneqarfik Sermersooq	2.239	3.069	2.583	13.107	1.238	22.236
Towns	2.071	2.836	2.422	12.406	1.128	20.863
Settlements ++	168	233	161	682	109	1.353
Qeqqata Kommunia	948	1.345	1.295	5.089	759	9.436
Towns	802	1.153	1.127	4.287	685	8.054
Settlements ++	146	192	168	802	74	1.382
Qaasuitsup Kommunia	1.717	2.611	2.328	9.147	1.488	17.291
Towns	1.283	1.876	1.759	7.122	1.184	13.224
Settlements ++	434	735	569	2.025	304	4.067
Outside Municipalities	-	-	22	203	6	231
Towns	-	-	-	-	-	-
Settlements ++	-	-	-	-	-	-
	Districts					
Nanortalik	171	288	194	992	218	1.863
Town	117	190	145	696	146	1.294
Settlements ++	46	93	44	282	69	534
Qaqortoq	348	461	535	1.774	303	3.421
Town	329	443	520	1.687	269	3.248
Settlements ++	13	12	10	63	31	129
Narsaq	171	245	185	973	230	1.804
Town	142	214	160	794	204	1.514
Settlements ++	19	15	15	143	21	213
Ivittuut	-	-	-	12	-	12
Town	-	-	-	-	-	-
Settlements ++	-	-	-	-	-	-
Paamiut	153	241	202	867	186	1.649
Town	143	226	189	808	173	1.539
Settlements ++	10	15	13	59	13	110
Nuuk	1.614	2.161	1.952	10.498	860	17.085
Town	1.589	2.143	1.914	10.341	831	16.818
Settlements ++	25	18	38	155	28	264
Maniitsoq	313	449	354	1.747	311	3.174
Town	244	366	270	1.399	251	2.530
Settlements ++	69	83	84	348	60	644
Sisimiut	635	896	941	3.342	448	6.262
Town	558	787	857	2.888	434	5.524
Settlements ++	77	109	84	454	14	738
Kangaatsiaq	117	239	185	584	82	1.207
Town	59	102	75	277	36	549
Settlements ++	58	137	110	307	46	658
Aasiaat	332	395	548	1.695	310	3.280
Town	311	364	536	1.603	288	3.102
Settlements ++	21	31	12	92	22	178
Qasigiannuit	114	186	146	664	141	1.251
Town	107	173	142	629	132	1.183
Settlements ++	7	13	4	35	9	68

Ilulissat	487	705	531	2.766	404	4.893
Town	452	658	483	2.569	368	4.530
Settlements ++	35	47	48	197	36	363
Qeqertarsuaq	58	141	95	464	129	887
Town	55	131	94	447	126	853
Settlements ++	3	10	1	17	3	34
Uummannaq	200	327	314	1.179	182	2.202
Town	106	193	177	679	93	1.248
Settlements ++	94	134	137	500	89	954
Upernavik	317	511	396	1.397	180	2.801
Town	115	170	160	587	92	1.124
Settlements ++	202	341	236	810	88	1.677
Qaanaaq	92	107	113	398	60	770
Town	78	85	92	331	49	635
Settlements ++	14	22	21	67	11	135
Tasiilaq	412	592	373	1.503	161	3.041
Town	279	392	263	1.035	93	2.062
Settlements ++	133	200	110	468	68	979
Illoqqortoormiut	60	75	56	227	31	449
Town	60	75	56	222	31	444
Settlements ++	-	-	-	-	-	-

<http://bank.stat.gl/beest3>

Source: Statistics Greenland

Population by age, gender, place of birth and marital status 2014

Table 4. Population by age, gender, place of birth and marital status 2014

	Males						Females				
	Total	Total	Unmarried	Married	Divorced	Widowed	Total	Unmarried	Married	Divorced	Widowed
Population											
Total	56.282	29.730	19.674	7.593	1.889	574	26.552	16.043	7.414	1.736	1.359
0-4	4.015	2.111	2.111	-	-	-	1.904	1.904	-	-	-
5-9	3.961	2.025	2.025	-	-	-	1.936	1.936	-	-	-
10-14	4.068	2.058	2.058	-	-	-	2.010	2.010	-	-	-
15-19	4.102	2.047	2.047	-	-	-	2.055	2.052	3	-	-
20-24	4.609	2.363	2.319	43	1	-	2.246	2.117	125	4	-
25-29	4.268	2.165	1.927	221	17	-	2.103	1.692	360	45	6
30-34	3.886	1.985	1.473	444	67	1	1.901	1.083	706	103	9
35-39	3.152	1.717	975	622	118	2	1.435	575	696	147	17
40-44	3.503	1.914	898	765	240	11	1.589	543	802	214	30
45-49	5.415	2.912	1.261	1.255	374	22	2.503	738	1.319	384	62
50-54	4.833	2.650	989	1.307	322	32	2.183	555	1.231	305	92
55-59	3.670	2.087	680	1.074	302	31	1.583	387	876	197	123
60-64	2.558	1.458	442	743	195	78	1.100	212	596	154	138
65-69	1.783	1.071	280	539	137	115	712	89	340	82	201
70-74	1.261	652	123	358	78	93	609	79	240	61	229
75-79	674	322	48	156	27	91	352	39	78	32	203
80-84	384	144	16	49	8	71	240	25	35	8	172
85-89	119	42	1	16	3	22	77	5	6	-	66
90-94	18	6	1	1	-	4	12	-	1	-	11
95+	3	1	-	-	-	1	2	2	-	-	-
Born Greenland											
Total	50.157	25.684	17.687	6.027	1.476	494	24.473	14.964	6.615	1.572	1.322
0-4	3.857	2.025	2.025	-	-	-	1.832	1.832	-	-	-
5-9	3.708	1.903	1.903	-	-	-	1.805	1.805	-	-	-
10-14	3.870	1.964	1.964	-	-	-	1.906	1.906	-	-	-
15-19	3.983	1.986	1.986	-	-	-	1.997	1.994	3	-	-
20-24	4.405	2.252	2.211	40	1	-	2.153	2.034	115	4	-
25-29	3.790	1.911	1.706	188	17	-	1.879	1.509	324	40	6
30-34	3.277	1.663	1.250	352	60	1	1.614	924	584	98	8
35-39	2.501	1.289	744	450	93	2	1.212	495	568	134	15
40-44	2.856	1.474	688	571	205	10	1.382	475	692	185	30
45-49	4.788	2.462	1.068	1.048	325	21	2.326	688	1.219	358	61
50-54	4.213	2.180	857	1.047	248	28	2.033	528	1.128	288	89
55-59	3.088	1.669	559	856	232	22	1.419	353	781	171	114
60-64	2.116	1.130	360	576	132	62	986	191	541	126	128
65-69	1.472	803	222	397	86	98	669	85	314	74	196
70-74	1.116	527	95	302	54	76	589	77	230	57	225
75-79	619	274	33	141	18	82	345	37	75	30	203
80-84	366	129	14	44	4	67	237	24	34	7	172
85-89	112	37	1	14	1	21	75	5	6	-	64
90-94	17	5	1	1	-	3	12	-	1	-	11
95+	3	1	-	-	-	1	2	2	-	-	-
Born outside Greenland											
Total	6.125	4.046	1.987	1.566	413	80	2.079	1.079	799	164	37
0-4	158	86	86	-	-	-	72	72	-	-	-
5-9	253	122	122	-	-	-	131	131	-	-	-
10-14	198	94	94	-	-	-	104	104	-	-	-
15-19	119	61	61	-	-	-	58	58	-	-	-
20-24	204	111	108	3	-	-	93	83	10	-	-
25-29	478	254	221	33	-	-	224	183	36	5	-
30-34	609	322	223	92	7	-	287	159	122	5	1
35-39	651	428	231	172	25	-	223	80	128	13	2

40-44	647	440	210	194	35	1	207	68	110	29	-
45-49	627	450	193	207	49	1	177	50	100	26	1
50-54	620	470	132	260	74	4	150	27	103	17	3
55-59	582	418	121	218	70	9	164	34	95	26	9
60-64	442	328	82	167	63	16	114	21	55	28	10
65-69	311	268	58	142	51	17	43	4	26	8	5
70-74	145	125	28	56	24	17	20	2	10	4	4
75-79	55	48	15	15	9	9	7	2	3	2	-
80-84	18	15	2	5	4	4	3	1	1	1	-
85-89	7	5	-	2	2	1	2	-	-	-	2
90-94	1	1	-	-	-	1	-	-	-	-	-
95+	-	-	-	-	-	-	-	-	-	-	-

<http://bank.stat.gl/beest5>

Notes: 1) Separated has counted as married

Source: Statistics Greenland

Population 2014-2023

Table 5. Population 2014-2023

	2014	2015	2016	2017	2018	2019	2020	2021	2022	2023
	Total									
Total	56.282	56.231	56.172	56.126	56.065	55.992	55.908	55.828	55.745	55.647
0-6	5.594	5.632	5.667	5.651	5.669	5.716	5.782	5.807	5.775	5.735
7-16	8.019	7.981	7.919	7.926	7.895	7.820	7.693	7.656	7.665	7.671
17-24	7.142	6.919	6.747	6.591	6.458	6.330	6.267	6.117	6.045	6.029
25-64	31.285	31.434	31.401	31.417	31.387	31.342	31.238	31.161	31.002	30.783
65+	4.242	4.265	4.438	4.541	4.656	4.784	4.928	5.087	5.258	5.429
	Born in Greenland									
Total	50.157	50.100	50.034	49.965	49.906	49.834	49.760	49.684	49.592	49.493
0-6	5.333	5.305	5.281	5.205	5.164	5.165	5.195	5.180	5.152	5.117
7-16	7.618	7.560	7.483	7.456	7.419	7.323	7.173	7.120	7.064	7.011
17-24	6.872	6.673	6.488	6.339	6.182	6.033	5.950	5.762	5.667	5.628
25-64	26.629	26.839	26.884	26.954	27.005	27.028	26.996	26.966	26.843	26.653
65+	3.705	3.723	3.898	4.011	4.136	4.285	4.446	4.656	4.866	5.084
	Born outside Greenland									
Total	6.125	6.131	6.138	6.161	6.159	6.158	6.148	6.144	6.153	6.154
0-6	261	327	386	446	505	551	587	627	623	618
7-16	401	421	436	470	476	497	520	536	601	660
17-24	270	246	259	252	276	297	317	355	378	401
25-64	4.656	4.595	4.517	4.463	4.382	4.314	4.242	4.195	4.159	4.130
65+	537	542	540	530	520	499	482	431	392	345

<http://bank.stat.gl/BEEP2012>

Source: Statistics Greenland

Life tables

Table 6. Life tables

	Male			Female			Male			Female		
	Survivors	Mortality	Life expectancy	Survivors	Mortality	Life expectancy	Survivors	Mortality	Life expectancy	Survivors	Mortality	Life expectancy
	1984-1988						1989-1993					
0	10.000	0,0264	61,0	10.000	0,0215	67,7	10.000	0,0275	61,7	10.000	0,0241	68,53
1	9.736	0,0159	61,7	9.785	0,0132	68,2	9.725	0,0183	62,5	9.759	0,0152	69,22
5	9.496	0,0017	59,2	9.554	0,0013	65,7	9.460	0,0015	60,1	9.559	0,0008	66,62
10	9.423	0,0015	54,6	9.513	0,0000	61,0	9.400	0,0006	55,5	9.529	0,0002	61,82
15	9.380	0,0026	49,8	9.510	0,0007	56,0	9.375	0,0013	50,6	9.512	0,0012	56,92
20	9.216	0,0080	45,6	9.444	0,0016	51,4	9.180	0,0078	46,6	9.434	0,0018	52,36
25	8.844	0,0065	42,4	9.343	0,0021	46,9	8.847	0,0057	43,2	9.376	0,0021	47,67
30	8.573	0,0044	38,6	9.238	0,0032	42,4	8.642	0,0054	39,2	9.284	0,0027	43,1
35	8.392	0,0034	34,4	9.124	0,0020	37,9	8.453	0,0036	35,0	9.201	0,0021	38,46
40	8.197	0,0041	30,1	8.987	0,0033	33,4	8.278	0,0057	30,6	9.096	0,0039	33,87
45	8.016	0,0073	25,7	8.771	0,0048	29,1	8.052	0,0077	26,4	8.901	0,0040	29,54
50	7.682	0,0112	21,7	8.501	0,0132	24,9	7.792	0,0100	22,2	8.636	0,0076	25,32
55	7.149	0,0232	18,0	8.053	0,0112	21,1	7.338	0,0138	18,3	8.259	0,0090	21,31
60	6.371	0,0286	14,8	7.343	0,0204	17,8	6.802	0,0257	14,5	7.717	0,0175	17,55
65	5.378	0,0407	11,9	6.575	0,0307	14,4	5.808	0,0425	11,3	6.912	0,0331	14,17
70	4.134	0,0653	9,3	5.571	0,0325	11,4	4.574	0,0744	8,4	5.602	0,0487	11,65
75	2.837	0,0747	7,0	4.353	0,0815	8,5	2.932	0,1007	6,2	4.510	0,0540	8,68
80	1.523	0,2129	5,1	2.897	0,1201	6,1	1.225	0,1678	4,9	3.005	0,1048	6,23
85	552	0,2411	3,7	1.432	0,2214	4,0	362	0,2169	3,5	1.482	0,1892	4,11
	1994-1998						1999-2003					
0	10.000	0,0180	63,3	10.000	0,0227	68,4	10.000	0,0163	65,1	10.000	0,0106	70,2
1	9.820	0,0108	63,4	9.773	0,0138	69,0	9.837	0,0092	65,2	9.894	0,0075	70,0
5	9.663	0,0016	60,4	9.590	0,0004	66,3	9.694	0,0010	62,1	9.784	0,0002	66,7
10	9.616	0,0008	55,7	9.572	0,0004	61,4	9.664	0,0004	57,3	9.767	0,0000	61,8
15	9.566	0,0028	51,0	9.562	0,0018	56,4	9.628	0,0022	52,5	9.752	0,0012	56,9
20	9.321	0,0071	47,2	9.473	0,0016	51,9	9.468	0,0073	48,3	9.656	0,0026	52,5
25	9.052	0,0052	43,5	9.394	0,0009	47,3	9.139	0,0026	44,9	9.560	0,0033	48,0
30	8.829	0,0053	39,5	9.338	0,0012	42,6	8.994	0,0026	40,6	9.433	0,0018	43,6
35	8.635	0,0047	35,3	9.275	0,0017	37,9	8.857	0,0036	36,2	9.352	0,0010	38,9
40	8.445	0,0047	31,0	9.163	0,0031	33,3	8.702	0,0033	31,8	9.271	0,0026	34,2
45	8.233	0,0050	26,7	9.003	0,0041	28,8	8.511	0,0048	27,4	9.130	0,0022	29,7
50	8.041	0,0057	22,3	8.798	0,0056	24,4	8.232	0,0071	23,2	8.929	0,0104	25,3
55	7.619	0,0111	18,3	8.454	0,0109	20,2	7.906	0,0089	19,0	8.496	0,0093	21,4
60	7.049	0,0218	14,5	7.766	0,0190	16,7	7.363	0,0281	15,1	8.056	0,0097	17,4
65	6.080	0,0417	11,2	6.939	0,0292	13,3	6.373	0,0361	11,9	7.238	0,0296	13,9
70	4.682	0,0703	8,5	5.761	0,0550	10,2	5.043	0,0645	9,2	6.087	0,0417	10,8
75	2.970	0,1261	6,4	4.114	0,0855	8,0	3.411	0,0961	6,8	4.699	0,0755	8,0
80	1.382	0,1877	4,9	2.465	0,1278	6,0	1.601	0,1570	5,6	2.721	0,1380	6,2
85	458	0,3514	3,2	1.025	0,1925	4,5	561	0,2750	4,5	1.155	0,1841	5,1
	2004-2008						2009-2013					
0	10.000	0,0118	67,1	10.000	0,0095	72,1	10.000	0,0104	68,6	10.000	0,0050	73,7
1	9.882	0,0079	66,9	9.905	0,0055	71,8	9.896	0,0061	68,3	9.950	0,0028	73,1
5	9.775	0,0014	63,6	9.823	0,0012	68,3	9.803	0,0005	64,9	9.904	0,0000	69,4
10	9.730	0,0004	58,9	9.796	0,0002	63,5	9.793	0,0002	60,0	9.902	0,0002	64,4
15	9.705	0,0016	54,0	9.771	0,0014	58,7	9.767	0,0006	55,1	9.879	0,0016	59,5
20	9.580	0,0054	49,7	9.684	0,0007	54,2	9.642	0,0046	50,8	9.791	0,0032	55,0
25	9.315	0,0052	46,0	9.624	0,0009	49,5	9.420	0,0040	46,9	9.704	0,0007	50,5
30	9.151	0,0030	41,8	9.583	0,0010	44,7	9.267	0,0030	42,6	9.674	0,0003	45,7
35	9.042	0,0027	37,2	9.512	0,0033	40,0	9.132	0,0034	38,2	9.626	0,0030	40,9
40	8.900	0,0041	32,8	9.418	0,0017	35,4	8.996	0,0029	33,7	9.509	0,0020	36,3
45	8.711	0,0044	28,4	9.324	0,0034	30,7	8.837	0,0030	29,3	9.424	0,0023	31,6

50	8.504	0,0061	24,0	9.132	0,0058	26,2	8.617	0,0050	24,9	9.252	0,0062	27,1
55	8.216	0,0083	19,7	8.816	0,0101	22,1	8.319	0,0105	20,7	9.029	0,0084	22,7
60	7.691	0,0147	15,8	8.297	0,0160	18,2	7.783	0,0198	16,9	8.580	0,0123	18,7
65	6.942	0,0310	12,1	7.660	0,0234	14,4	7.089	0,0252	13,2	7.878	0,0218	15,1
70	5.589	0,0590	9,2	6.521	0,0399	11,3	5.974	0,0434	9,9	6.793	0,0343	11,9
75	3.804	0,1013	6,8	4.916	0,0580	8,8	4.256	0,0915	7,5	5.434	0,0629	9,0
80	1.946	0,1599	4,9	3.188	0,1073	6,6	2.343	0,1592	5,8	3.709	0,1009	6,6
85	578	0,2768	3,6	1.583	0,2130	4,7	926	0,2650	4,4	1.751	0,1620	5,0

<http://bank.stat.gl/beeabd2>

Note.: Survivors refers to the lowest birthday in stub. For example, there would be 9,722 in 1986-1990 one-year-old boys of a generation of 10.000. The deathrate indicates the 10,000-share of the risk of dying between the two birthdays in the stub. Life expectancy is the average of the residual lifetimes, there will be claimed by a group, who die according to the life table.

Source: Statistics Greenland

Liveborn children by mothers age

Table 7. Liveborn children by mothers age

		1980	1985	1990	1995	2000	2005	2010	2013
		Liveborn							
Total		1.034	1.152	1.258	1.101	879	886	869	820
	15-19	203	213	123	120	150	147	85	92
	20-24	314	409	446	250	241	277	263	238
	25-29	304	288	404	365	196	193	233	247
	30-34	135	176	198	266	192	147	166	169
	35-39	57	51	76	81	89	100	59	63
	40-44	17	13	11	18	10	19	14	11
	45+	1	2	-	-	1	2	-	-
By Mothers born in Greenland		913	1.033	1.144	1.012	807	794	774	761
	15-19	201	208	118	115	148	142	84	92
	20-24	291	393	425	242	224	268	261	226
	25-29	253	229	366	328	171	157	215	231
	30-34	105	152	163	238	168	115	141	134
	35-39	45	39	64	72	85	92	47	53
	40-44	14	10	8	16	10	18	13	10
	45+	1	2	-	-	1	1	-	-
		Meanpop.							
Total	15-19	3.063	2.831	1.684	1.694	1.912	2.243	2.262	2.480
	20-24	2.417	3.095	2.790	1.583	1.631	1.919	2.187	2.259
	25-29	2.012	2.514	3.095	2.733	1.557	1.641	1.905	2.057
	30-34	1.567	1.988	2.457	2.909	2.613	1.587	1.611	1.853
	35-39	1.512	1.497	1.833	2.205	2.728	2.497	1.462	1.413
	40-44	1.104	1.400	1.387	1.671	2.041	2.598	2.335	1.691
	45+	1.029	1.057	1.330	1.253	1.574	1.936	2.456	2.494
Women born in Greenland	15-19	2.918	2.667	1.508	1.550	1.834	2.156	2.199	2.410
	20-24	2.193	2.881	2.576	1.430	1.488	1.816	2.077	2.167
	25-29	1.614	2.170	2.770	2.467	1.344	1.390	1.702	1.831
	30-34	1.159	1.603	2.109	2.633	2.370	1.310	1.337	1.579
	35-39	1.194	1.146	1.540	1.968	2.522	2.282	1.246	1.192
	40-44	969	1.137	1.114	1.460	1.841	2.426	2.172	1.491
	45+	929	934	1.098	1.049	1.382	1.753	2.290	2.329
		Fertility							
Total	Total fertility	2.438	2.279	2.467	2.506	2.319	2.343	2.252	2.018
	15-19	66	75	73	71	78	66	52	34
	20-24	130	132	160	158	148	144	113	116
	25-29	151	115	131	134	126	118	138	113
	30-34	86	89	81	91	73	93	86	90
	35-39	38	34	41	37	33	40	49	42
	40-44	15	9	8	11	5	7	11	8
	45+	1	2	-	-	1	1	-	-
Women born in Greenland	Total fertility	2.511	2.299	2.507	2.572	2.346	2.313	2.189	2.051
	15-19	69	78	78	74	81	66	53	35
	20-24	133	136	165	169	151	148	113	120
	25-29	157	106	132	133	127	113	140	117
	30-34	91	95	77	90	71	88	78	89
	35-39	38	34	42	37	34	40	43	39
	40-44	14	9	7	11	5	7	10	9
	45+	1	2	-	-	1	1	-	-

<http://bank.stat.gl/beebbm1>

Source: Statistics Greenland

Migrations by place of birth

Table 8. Migrations by place of birth

	Immigrations			Emigrations		
	Total	Born in Greenland	Born outside Greenland	Total	Born in Greenland	Born outside Greenland
1993	2.091	466	1.625	2.618	799	1.819
1994	2.119	472	1.647	2.473	780	1.693
1995	2.236	532	1.704	2.702	898	1.804
1996	2.414	662	1.752	2.897	1.081	1.816
1997	2.579	740	1.839	2.980	1.113	1.867
1998	2.419	735	1.684	2.934	1.154	1.780
1999	2.488	803	1.685	2.804	1.093	1.711
2000	2.794	978	1.816	2.888	1.127	1.761
2001	2.461	804	1.657	2.708	1.038	1.670
2002	2.126	624	1.502	2.414	981	1.433
2003	2.388	826	1.562	2.733	1.141	1.592
2004	2.482	923	1.559	2.718	1.114	1.604
2005	2.514	870	1.644	2.962	1.252	1.710
2006	2.404	890	1.514	3.048	1.358	1.690
2007	2.417	886	1.531	2.983	1.393	1.590
2008	2.536	907	1.629	3.175	1.560	1.615
2009	2.551	1.076	1.475	2.740	1.354	1.386
2010	2.491	1.043	1.448	2.651	1.334	1.317
2011	2.283	905	1.378	2.442	1.215	1.227
2012	2.191	871	1.320	2.900	1.483	1.417
2013	2.066	967	1.099	2.513	1.307	1.206

<http://bank.stat.gl/beebbiu2>

Source: Statistics Greenland

Population by citizenship. Selected years 1980-2014

Table 9. Population by citizenship. Selected years 1980-2014

Citizenship	1980	1985	1990	1995	2000	2005	2010	2014
Total	49.785	52.955	55.567	55.732	56.110	56.972	56.452	56.282
Denmark	49.400	52.501	55.129	55.418	55.602	56.442	55.716	55.295
Finland	15	7	9	4	10	5	8	18
Iceland	15	21	26	34	115	100	94	177
Norway	129	138	116	66	84	48	61	72
Sweden	108	144	145	63	100	86	92	100
Estonia	-	-	-	-	3	3	-	-
Latvia	-	-	-	-	-	-	-	3
Lithuania	-	-	-	-	1	1	7	3
Belgium	-	-	2	1	2	3	4	3
Cyprus	-	-	1	-	1	1	-	-
France	13	10	8	9	10	11	13	12
Greece	-	-	1	-	-	-	-	-
Netherlands	2	4	2	4	5	4	8	5
Ireland	1	-	1	3	-	3	2	2
Italy	1	3	2	2	6	7	5	8
Luxembourg	-	-	-	-	-	-	-	-
Malta	-	-	-	-	-	-	-	-
Poland	-	-	4	-	3	2	24	31
Portugal	-	-	1	1	-	-	-	-
Slovakia	-	-	-	-	-	-	6	7
Slovenia	-	-	-	-	-	-	-	-
Croatia	-	-	-	-	-	-	1	1
Spain	1	3	4	3	1	-	2	4
Great Britain	-	-	34	22	20	12	22	13
Czech Republic	-	-	-	-	1	2	1	-
Czechoslovakia (former)	-	2	3	-	-	-	-	-
Germany	28	24	20	20	24	46	61	62
East Germany (former)	-	-	-	-	-	-	-	-
Hungary	3	-	1	-	-	-	-	-
Austria	5	1	-	-	1	-	3	5
Switzerland	2	4	4	2	3	8	7	4
Bulgaria	-	-	-	3	7	10	16	20
Romania	-	-	-	-	1	9	11	14
Turkey	-	1	1	-	-	-	2	2
Russia	-	-	-	-	13	18	3	6
Soviet Union (former)	-	-	-	-	-	1	1	-
Belarus	-	-	-	-	-	-	-	-
Ukraine	-	-	-	1	-	-	-	-
Other Europe	2	1	2	2	2	1	1	2
USA	16	31	22	23	19	18	29	39
Canada	3	12	4	14	8	20	13	12
Other America	1	-	3	6	9	6	13	15
Ethiopia	-	-	-	-	-	-	-	-
Morocco	-	-	-	-	-	1	1	3
Somalia	-	-	-	-	-	-	-	-
Other Africa	-	1	2	1	3	1	9	12
Afghanistan	-	-	-	-	-	-	-	-
Bangladesh	-	-	-	-	-	-	1	-
Philippines	-	-	-	6	5	10	51	130
India	-	1	1	1	4	5	1	-
Iraq	-	-	-	-	-	-	-	-
Iran	-	1	4	-	2	-	1	1
Japan	1	1	2	2	3	2	6	4
China	-	-	-	-	-	5	6	10

Lebanon	-	-	1	-	-	-	-	-
Pakistan	-	-	-	-	1	1	2	2
Sri Lanka	-	-	-	1	-	2	1	1
Syria	-	-	-	-	-	-	-	-
Thailand	-	3	6	14	37	63	131	166
Vietnam	-	-	-	-	-	-	-	-
Other Asia	-	-	3	2	3	9	12	10
Oceania	-	-	-	2	1	5	4	3
Stateless	-	-	1	-	-	-	-	-
Unknown	39	41	2	2	-	1	-	5

<http://bank.stat.gl/beest6>

Source: Statistics Greenland

Signatur forklaring:

- ... Oplysninger foreligger ikke
- .. Oplysninger for usikre til at angives eller diskretionshensyn
- . Tal kan efter sagens natur ikke forekomme
- 0 Mindre end halvdelen af den anvendte enhed
- Nul
- * Foreløbigt eller anslået tal

Eventuel henvendelse

Lars Pedersen

E-mail: LARP@stat.gl

2014 statistical yearbook

Grønlands Statistik
 Postboks 1025 · 3900 Nuuk
 Tlf.: +299 34 57 70 · Fax: +299 34 57 90
 www.stat.gl · e-mail: stat@stat.gl

