

Vital Statistics 2017

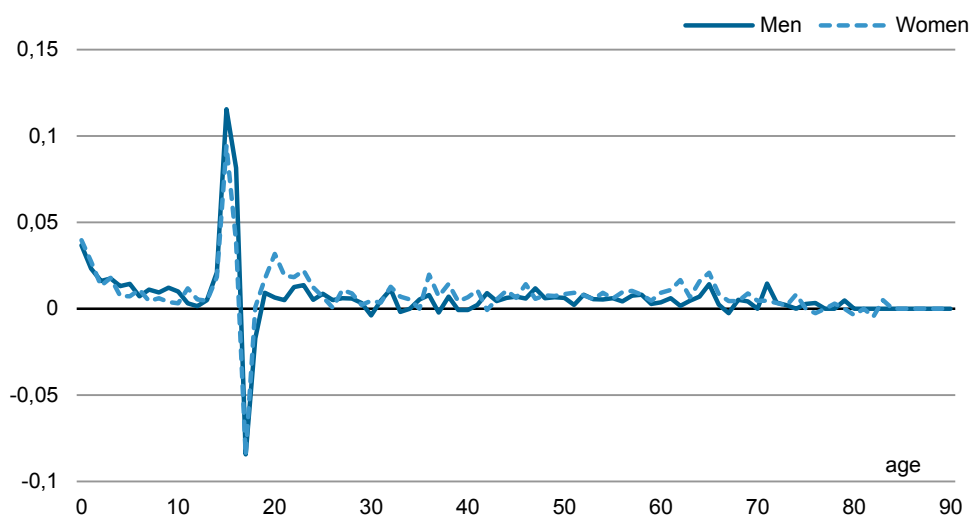
Vital Statistics 2017

Corrected May 5th. 2018
Graph 1 & 2 changed
Greater difference between gender

Emigration throughout life

Many move between Greenland and abroad one or more times throughout their lifespan. In population statistics, this is counted as migrations. In Graph 1 'age-specific net migration rates' are shown for the period 2012-2016.

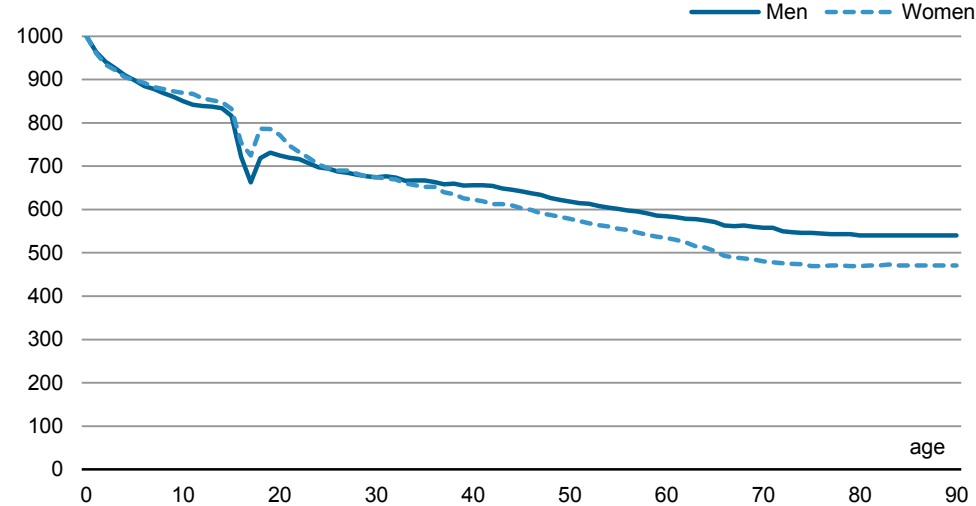
Graph 1 Age-specific net migration rates 2012-2016



Based on events from the 5-year period 2012-2016, the effect of immigration and emigration can be calculated for an artificial cohort of 1000 men and 1000 women. Cohort size is reduced in calculations by net migration only. Figure 1 shows that the artificial cohort can be expected to be halved towards retirement age, after which only very few move between Greenland and the outside world. For Greenland-born women, a slightly higher net emigration is observed the 60ties, compared to Greenland-born men.

In the ages 16-17, the effect of stay on independent boarding school for lower secondary students is seen, where net emigration is followed by net immigration the next year.

Graph 2. Effect of immigration and emigration on cohort size



Source: Calculations by Statistics Greenland

Figures in our Statbank

Figures in our Statbank

On population we can present detailed, coherent and consistent statistical information for:

Population estimates: 1977-2017

Births: 1973-2016

Deaths: 1973-2016

Cause of Deaths: 1990-2013

Migration: 1993-2016

Internal migration: 1993-2016

In creating these tables the present administrative subdivision has been used and municipalities are as defined on January 1st 2009. At lower levels we use 2 concepts; districts are equivalent with municipalities prior to 2009 and localities. A locality is a place and can be any town, settlement, station, mine and can be inhabited or not. For definition we use the one ASIAQ (www.asiaq.gl) has determined. The Asiaq list on localities is as of now not complete with regards to historical localities.

To ensure consistency at detailed levels we have revised our data once again. Some minor inconsistencies have been corrected, and some differences can be found in comparing the revised tables with previously publications.

For fast access to a relevant table in the Statbank, links are found below each table and graph on the following pages.

Summary table 1. Population January 1st by gender, 2009-2017

	2009	2010	2011	2012	2013	2014	2015	2016	2017
Total	56.193	56.452	56.615	56.749	56.370	56.282	55.984	55.847	55.860
Men	29.808	29.936	29.942	30.041	29.838	29.730	29.556	29.543	29.493
Women	26.385	26.516	26.673	26.708	26.532	26.552	26.428	26.304	26.367

Visit our Statbank: (<http://bank.stat.gl/beest1>)

During 2016 total population rose by 13 persons. This is due to these changes:

Summary table 2. Changes to the population in 2016

Population estimate January 1st 2016	55.847
+ births	830
- deaths	-488
+ immigrated	2.447
- emigrated	-2.753
- corrections	-17
Population estimate January 1st 2017	55.860

In the Statbank you can combine information on residence, gender, mother's age and place of birth from 1977 and onward. Geographically you can choose between municipalities, districts and localities. The most detailed table holds half a million table cells.

Summary table 3. Births in the municipalities 2014-2016

	2014	2015	2016
			number of live births
Total	806	855	830
Kujalleq	94	123	77
Sermersooq	326	336	296
Qeqqata	127	123	139
Qaasuitsup	259	273	318

Visit our Statbank: (<http://bank.stat.gl/BEEBBLM2>)

The fertility pattern has been unchanged with total fertility at reproduction level. Graph 1 shows the total fertility rates over the past 10 years. There are no major differences at the municipal level. But large differences can be found between towns and settlements. Visit our Statbank:

<http://bank.stat.gl/BEEBBSF2>

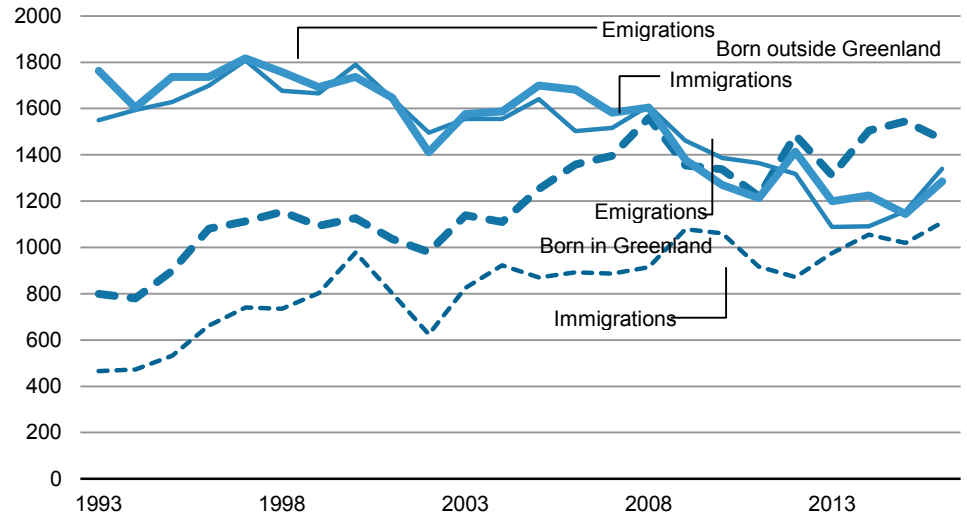
Summary table 4. Deaths in the municipalities 2014-2015

	Men		Women		Total	
	2014	2015	2014	2015	2014	2015
	Death					
Total	240	291	224	188	464	479
Towns	202	244	188	168	390	412
Settlements	38	47	36	20	74	67
Kommune Kujalleq						
Total	43	56	43	35	86	91
Towns	36	46	35	32	71	78
Settlements	7	10	8	3	15	13
Kommuneqarfik Sermersooq						
Total	86	92	58	66	144	158
Towns	72	81	52	58	124	139
Settlements	14	11	6	8	20	19
Qeqqata Kommunua						
Total	42	35	45	35	87	70
Towns	39	32	41	32	80	64
Settlements	3	3	4	3	7	6
Qaasuitsup Kommunua						
Total	69	107	78	52	147	159
Towns	55	85	60	46	115	131
Settlements	14	22	18	6	32	28

Visit our Statbank: (<http://bank.stat.gl/beebdm2>)

In the graph 2 below the number of migrations by gender and place of birth 1993-2016 can be seen. Every year more people choose to emigrate than to immigrate. In 2016 2.447 persons immigrated while 2.753 persons emigrated.

Graph 2. Migrations 1993-2016



Visit our Statbank: (<http://bank.stat.gl/beebbiu2>)

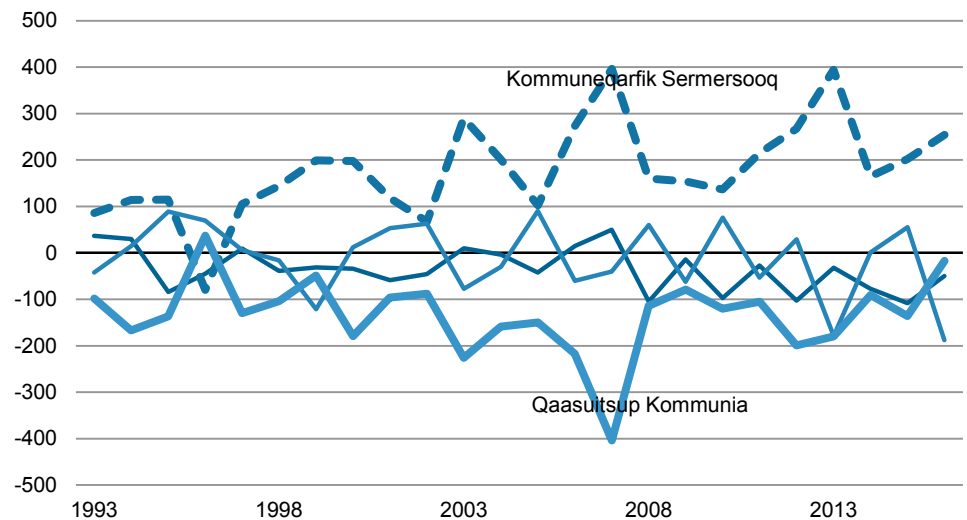
23.179 changes of addresses were recorded in 2016, which is at same level as for the past 5 years. Most moving's takes place within the same locality.

Summary table 5. Internal migrations 2016

	Kommuneqar					Municipality of removal Total
	Kommune Kujalleq	-fik Sermersooq	Qeqqata Kommunua	Qaasuitsup Kommunua	Other localities	
Municipality of migration	3.190	8.774	4.155	7.048	12	23.179
Kommune Kujalleq	2.551	315	109	165	0	3.140
Kommuneqarfik Sermersooq	386	7.483	565	589	5	9.028
Qeqqata Kommunua	114	382	3.189	280	2	3.967
Qaasuitsup Kommunua	138	588	290	6.010	5	7.031
Other localities	1	6	2	4	0	13

Visit our Statbank: (<http://bank.stat.gl/beebaf2b>)

Graph 3. Net internal migrations in the municipalities 1993-2016



Visit our Statbank: (<http://bank.stat.gl/beebaf2>)

General legend:

- ... Data not available
- .. Information too unreliable to be quoted or secrecy
- . Figures can by nature not occur
- 0 Less than half of the unit used
- Nul
- * Preliminary or estimated figures

additional questions, please contact

Lars Pedersen
E-mail: LARP@stat.gl

Population

Statistics Greenland
Box 1025 · 3900 Nuuk
Tel.: +299 34 57 70 · Fax: +299 34 57 90
www.stat.gl · e-mail: stat@stat.gl

