

GREENLAND

IN FIGURES 2003

896	308,221	300,804	307,720	176,883
323	116,038	221,390	386,389	203,358
344	87,251	136,750	381,269	308,245
467	87,903	175,644	315,540	159,490
530	155,285	286,645	470,455	284,378
672	116,052	216,383	328,193	192,957
568	142,821	262,209	426,377	247,000
888	120,868	181,840	306,387	181,230
557	116,883	211,205	325,058	183,534
374	121,130	182,205	327,270	207,882
871	143,814	249,823	400,418	232,476
881	181,402	242,725	380,478	277,833
851	180,181	225,238	350,520	209,033
845	161,628	257,774	361,409	224,788
747	120,428	189,218	270,238	164,425
414	116,711	205,148	363,279	308,243
056	89,300	207,501	354,483	183,370

STATISTICS GREENLAND
Greenland Home Rule Government

Index

1	POPULATION	19	ENERGY
6	ELECTION	22	EDUCATION
8	FISHING AND HUNTING	22	CULTURE
10	LABOUR MARKET	23	TOURISM
12	INCOME	24	SOCIAL & HEALTH
13	PRICES AND ECONOMY	27	HOUSING
16	FOREIGN TRADE	28	JUDICIAL SYSTEM
17	TRANSPORT	30	CLIMATE
		31	TELECOMMUNICATION

Greenland in Figures 2003

2. Edition · August 2003

Published on behalf of Statistics Greenland

Greenland Home Rule Government

Telephone: +299 34 55 64 · Fax: +299 32 29 54

E-mail: stat@gh.gl · www.statgreen.gl

Editors: Thorkild Knudsen · Lene Baunbæk

Typesetting and graphics: Infodesign ApS · www.infodesign.gl

Photos: Knud Josefsen

Number printed: 6.000

Price: 5 dkr.

© Statistics Greenland 2003

Acknowledgement must be made of any quotations reproduced.

LIST OF SIGNS:

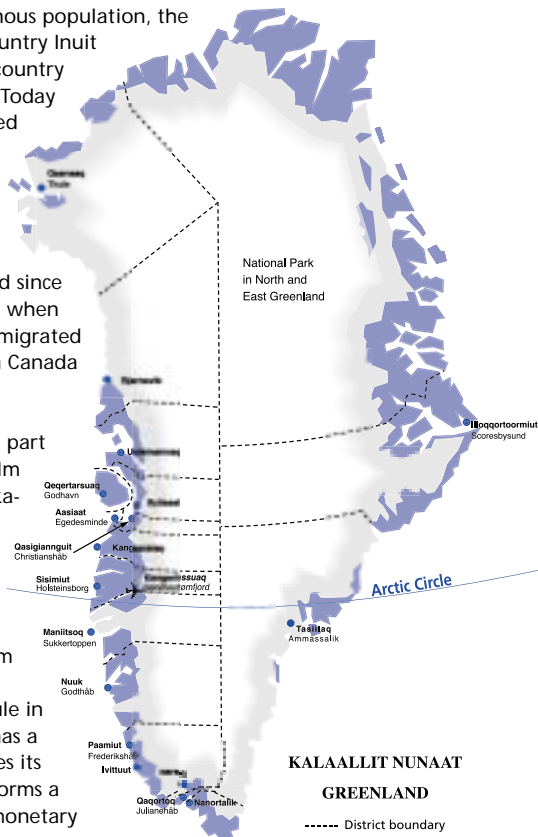
- 0
- . Category not applicable
- 0 Less than 0.5 of the unit used
- ... Data not available
- * Provisional or estimated figures

Kalaallit Nunaat

Earlier the indigenous population, the Inuit called the country Inuit Nunaat meaning country of human beings. Today the country is called Kalaallit Nunaat, which means "country of the Greenlanders". Kalaallit Nunaat has been inhabited since around 2,500 B.C., when smaller groups immigrated from the northern Canada crossing the ice.

Kalaallit Nunaat is part of the Danish Realm called Rigsfællesskabet between Denmark, the Faeroe Islands and Greenland.

After a referendum Kalaallit Nunaat acquired Home Rule in 1979. Greenland has a national flag, issues its own stamps and forms a part of a Danish monetary and exchange union.



Population in municipalities January 1st

	1991	1995	1999	2003
Total	55.620	55.732	56.087	56.676
Nanortalik	2.661	2.660	2.577	2.468
Qaqortoq	3.565	3.577	3.481	3.406
Narsaq	2.156	2.138	2.087	2.047
Ivittuut	211	222	171	178
Paamiut	2.500	2.325	2.110	2.019
Nuuk	12.730	13.148	13.566	14.265
Maniitsoq	4.122	3.892	3.791	3.681
Sisimiut	5.175	5.228	5.385	6.024
Kangaatsiaq	1.394	1.522	1.495	1.516
Aasiaat	3.568	3.418	3.460	3.367
Qasigiannuit	1.731	1.627	1.569	1.422
Ilulissat	4.520	4.497	4.629	5.007
Qeqertarsuaq	1.162	1.177	1.056	1.059
Uummannaq	2.611	2.666	2.785	2.655
Upernavik	2.447	2.727	2.883	2.906
Qaanaaq	818	881	857	859
Ammassalik	2.945	2.969	2.913	3.007
Illoqqortoormiut	543	519	558	541
Outside municipalities	761	539	714	249

Population by sex and age January 1st 2003

	Total	Men	Women
Total	56.676	30.249	26.427
0-6 years	6.484	3.284	3.200
7-14 years	8.349	4.216	4.133
15-17 years	2.504	1.286	1.218
18-24 years	5.335	2.764	2.571
25-59 years	28.991	16.150	12.841
60-66 years	2.544	1.434	1.110
67 years and over	2.469	1.115	1.354

Population in municipalities, towns and settlements

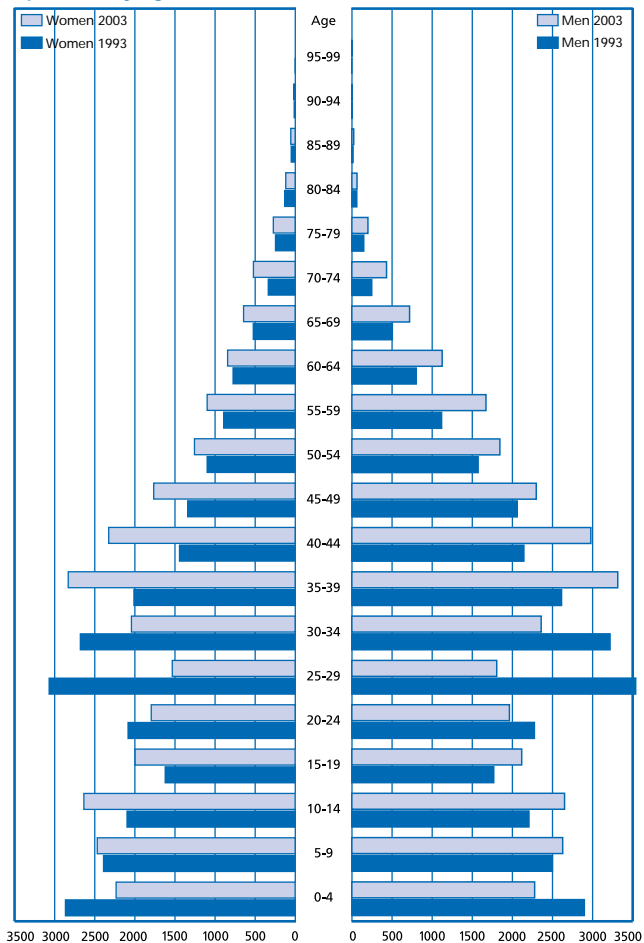
	1993		2003	
	Towns	Settlements	Towns	Settlements
Total	44.289	10.828	46.600	10.076
Nanortalik	1.499	1.194	1.549	919
Qaqortoq	3.109	403	3.129	277
Narsaq	1.740	367	1.699	348
Ivittuut	1	215	30	148
Paamiut	2.148	314	1.842	177
Nuuk	12.181	472	13.884	381
Maniitsoq	3.028	911	2.899	782
Sisimiut	4.881	227	5.263	761
Kangaatsiaq	622	868	660	856
Aasiaat	3.253	268	3.142	225
Qasigiannqut	1.545	108	1.342	80
Ilulissat	4.072	415	4.525	482
Qeqertarsuaq	1.120	68	1.006	53
Uummannaq	1.402	1.203	1.423	1.232
Upernavik	1.044	1.549	1.218	1.688
Qaanaaq	607	261	648	211
Ammassalik	1.592	1.339	1.818	1.189
Illoqqortoormiut	445	82	523	18
Outside municipalities	-	564	-	249

Greenlanders in Denmark and Danes in Greenland

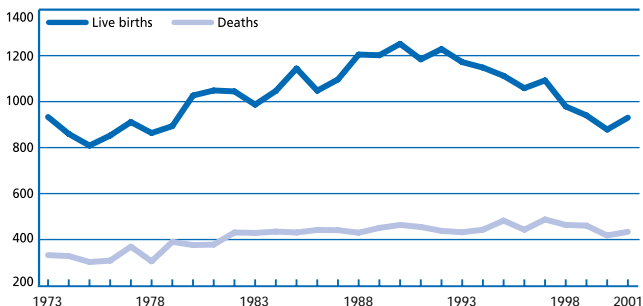
	1972	1980	1985	2000
	----- NUMBER OF PERSONS -----			
Greenlanders in Denmark	2.843*	5.936*	8.889	12.040
Persons older than 20 years	1.831	4.427	5.392	8.188
Danes in Greenland	...	8.826	9.353	6.755
Persons older than 20 years	...	6.831	7.362	5.870

*Persons older than 15 years

Population by age



Births and deaths



Migration

	1982	1987	1991	1997	2002
Net immigration	-148	169	-909	401	288
Immigrations, total	3.392	3.971	2.464	2.980	2.414
Persons born in Greenland	749	751	550	1.113	981
Persons born outside Greenland	2.643	3.220	1.914	1.867	1.433
Emigration, total	3.540	3.802	3.373	2.579	2.126
Persons born in Greenland	873	895	825	740	624
Persons born outside Greenland	2.667	2.907	2.548	1.839	1.502

Domestic removals

	1982	1987	1991	1997	2002
Total removals	10.999	14.358	15.980	16.614	17.456
Intermunicipal removals	3.625	4.748	4.669	4.794	4.917
Within the same town	6.118	7.734	9.565	9.618	10.460
Between towns	2.939	3.925	3.778	3.653	3.881
From settlement to town	595	698	752	943	1.099
From town to settlement	482	633	735	782	821
Within the same settlement	511	907	714	1.090	842
From one settlement to another	187	294	292	281	277
From one station to another	167	167	144	247	76

Election

Election to the Greenland Parliament, December 3rd 2002 by municipalities

	Electorate	Votes cast	Valid votes	Percentage voting
Total	38.365	28.616	28.303	74,6
Nanortalik	1.671	1.270	1.258	76,0
Qaqortoq	2.412	1.879	1.826	77,9
Narsaq	1.458	1.164	1.150	79,8
Ivittuut	135	59	59	43,7
Paamiut	1.401	1.041	1.030	74,3
Nuuk	10.085	7.400	7.295	73,4
Maniitsoq	2.471	1.800	1.781	72,8
Sisimiut	4.083	2.934	2.934	71,9
Kangaatsiaq	922	701	694	76,0
Aasiaat	2.371	1.754	1.754	74,0
Qasigiannquit	987	788	775	79,8
Ilulissat	3.376	2.619	2.595	77,6
Qeqertarsuaq	718	579	566	80,6
Uummannaq	1.751	1.401	1.383	80,0
Upernavik	1.828	1.362	1.349	74,5
Qaanaaq	554	437	436	78,9
Ammassalik	1.808	1.173	1.163	64,9
Illoqqortoormiut	334	255	255	76,3

Election to the Greenland Parliament, December 3rd 2002 by parties

	Votes	Per cent	Mandates	Elected women
Total	28.616	100,0	31	11
Arnat Partiiat	686	2,4	-	-
Atassut	5.780	20,2	7	3
Demokraterne	4.558	15,9	5	2
Inuit Ataqatigiit	7.244	25,3	8	4
Siumut	8.151	28,5	10	2
Outside parties	1.884	6,6	1	0

Election to the municipal councils, April 3rd 2001

	Greenland	South	Central	Disco	North/East
Electorate	37.912	7.120	16.315	8.230	6.247
Valid votes	25.692	5.334	9.900	6.103	4.355
Invalid votes	289	54	128	56	51
Percentage voting	68,5	75,7	61,5	74,8	70,5
Distribution of votes	100,0	100,0	100,0	100,0	100,0
Atassut	24,5	19,1	27,2	24,4	25,0
Inuit Ataqtigiit	20,3	29,3	18,9	18,7	14,9
Siumut	44,1	44,6	46,5	30,6	57,2
Alliance of candidates	10,2	3,5	7,4	26,1	2,6
Single candidates	0,8	3,5	0,0	0,2	0,3

Election to the Danish Parliament, November 20th 2001

	Greenland	South	Central	Disco	North/East
Electorate	38.698	7.135	16.891	8.321	6.351
Valid votes	23.255	4.487	9.956	5.181	3.631
Invalid votes	566	93	310	91	72
Percentage voting	61,6	64,2	60,8	63,4	58,3
Distribution of votes	100,0	100,0	100,0	100,0	100,0
Atassut	22,1	20,3	22,8	22,0	22,4
Inuit Ataqtigiit	30,8	32,9	31,8	32,4	23,4
Siumut	25,9	29,1	25,9	20,6	29,6
Alliance of candidates	19,1	16,8	18,7	19,0	22,9
Single candidates	2,1	0,8	0,8	6,0	1,7

Referendum on the European Union Februar 23th 1982

	Percentage voting	Percentage of valid votes	
		For	Against
Should Greenland continue in the European Union?	74,9	47,0	53,1

Fishing

Fishing is the lifeline of Greenland and the primary industry of the country. 90 per cent of all exports are derived from fish products including prawns and Greenland halibut. Greenland has the legislative competence for the fisheries sector. The fisheries for prawns and Greenland halibut are regulated by quota and license regulations decided on by the Cabinet on the basis of the biological advice to ensure a sustainable use of the natural resources.

Total fisheries in Greenlandic waters

	1993	1995	1997	1999*	2001*
Near-shore	----- 1.000 TONNES -----				
Total	115,3	127,9	103,2	117,5	144,6
Prawn	76,5	82,7	63,7	75,2	85,8
Cod	7,6	9,2	7,7	4,1	5,6
Halibut	13,5	18,6	24,3	27,4	20,7
Crab	0,0	1,0	3,2	4,9	14,2
Other catches	17,7	16,4	4,3	5,8	18,2
Total catches	----- 1.000 TONNES -----				
Total	550,6	149,7	339,3	196,8	291,6
Greenlandic fishermen	115,3	127,9	121,3	145,7	143,0
Charter boat fisheries	2,5	1,9	-	-	-
Foreign fishermen	432,8	19,9	218,0	51,1	148,6
	112,1	264,3	244,3	114,8	

* Provisional figures

Paid hunting licenses

	1994	1996	1998	2000	2002
	----- NUMBER OF PERSONS -----				
Total	7.316	9.926	10.215	10.778	12.538
Hunters	3.150	3.996	2.573	2.585	2.864
Sportsmen	4.166	5.930	7.642	8.193	9.674

Whaling

	1994	1996	1998	2000	2002
	----- NUMBERS -----				
Total	3.267	3.224	4.169	2.982	1.190
Large whales, total	125	195	185	161	162
Minkwhale	105	176	176	155	149
Fin whale	20	19	9	6	13
Small whales, total	3.142	3.029	3.984	2.821	1.028
Beluga	527	542	746	609	53
Narwhale	881	738	822	600	246
Harbour porpoise	1.734	1.682	2.051	1.607	723
Long-finned pilot whale	-	67	365	5	6

Active fishing vessels at the end of 2002

	Greenland total	Region South	Region Central	Region North	Region East
	----- NUMBERS -----				
Fishing vessels, total	466	59	217	183	7
0-10 BRT	191	34	74	77	6
11-20 BRT	154	14	70	70	-
21-50 BRT	30	3	11	16	-
51-80 BRT	23	3	14	6	-
81-120 BRT	15	2	7	6	-
121BRT and more	53	3	41	8	1

Livestock

	1980	1990	2000	2001	2002
	----- NUMBER OF ANIMALS -----				
Sheep	23.134	19.929	20.444	20.394	18.967
Horses	197	145	138	131	148
Beehives	-	-	18	18	11
Fowls	538	386	175	170	166
Cows	-	-	5	5	12
Tame reindeer	3.800	6.000	2.000	2.480	3.100

Labour market

Labour market, January 1st

	1999	2000	2001	2002	2003*
	----- NUMBER OF PERSONS -----				
Total population	56.087	56.124	56.245	56.542	56.676
Total labour force ¹⁾	30.745	30.929	31.181	31.506	31.763
Work frequency ²⁾	82,2	82,5	82,8	82,9	83,2
Men	81,4	81,5	81,8	81,9	82,3
Women	83,3	83,8	84,0	84,2	84,3
Employees in employment	28.687	28.935	28.936	29.373	29.428
Unemployed persons ³⁾	2.058	1.994	2.245	2.133	2.335
Unemployment rate	6,7	6,4	7,2	6,8	7,4
Men	7,2	7,0	8,0	6,9	6,7
Women	6,1	5,8	6,2	5,9	5,4

1) Persons aged 15-62 years living in towns.

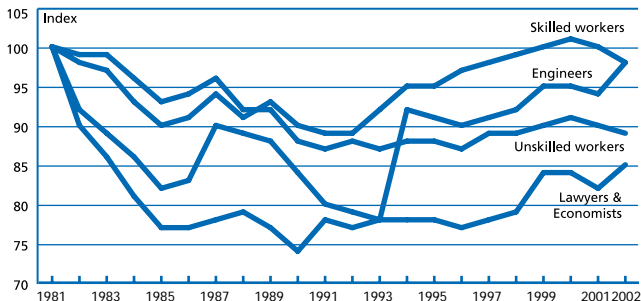
2) The work frequency states the number of persons in the labour force aged 15-62 years in per cent of the total population aged 15-62 years.

3) Persons out of work in the middle of the first quarter.

Employment distributed by trades and industries

	1998			2000		
	Total	Born in Greenland	Born outside Greenland	Total	Born in Greenland	Born outside Greenland
Total active population	31.156	25.983	5.173	26.974	20.525	6.449
Wage earner	7	6	1	713	98	615
Danish employer	690	202	488	379	154	225
Animal husbandry, fishing and hunting	2.225	2.027	198	2.039	1.653	386
Quarrying and -inquiry	10	7	3	18	11	7
Manufacturing industries	4.019	3.694	325	2.508	2.255	253
- of which fishing industries	3.411	3.191	220	2.630	2.072	558
Energy supply	480	329	151	467	312	155
Construction	1.957	1.272	685	1.808	1.054	754
Wholesale business	217	155	62	193	130	63
Retail trade	2.199	1.904	295	1.414	1.135	279
Hotel and restauration	770	604	166	797	485	312
Tranportation and tourism	1.557	1.193	364	1.622	1.165	457
Post and tele service	574	427	147	573	421	152
Financial services, insurance, pension, real estate	121	64	57	380	259	121
Other business service	307	165	142	374	193	181
Cleaning service	506	463	43	520	465	55
Public administration	14.629	12.699	1.930	12.588	10.234	2.354
Education	25	25	0	15	15	0
Social institutions, nurseries etc.	48	36	12	37	26	11
Organizations and institutions	278	248	30	179	155	24
Entertainment, sport and culture	417	371	46	300	264	36
Other service business	43	34	9	31	25	6
International organizations	18	17	1	8	7	1
Unknown sector	59	41	18	11	9	2

The development in real wages for four different groups of public employees



Taxable income in 2001, by birthplace and municipalities

	Outside Greenland		In Greenland	
	Singles	Couples	Singles	Couples
	-----KR.-----			
Greenland	278.832	255.506	95.289	139.907
Nanortalik	241.478	260.124	73.166	113.178
Qaqortoq	214.952	286.570	104.178	171.370
Narsaq	274.831	245.891	99.201	147.422
Paamiut	234.189	172.654	98.109	128.994
Nuuk	333.751	359.544	141.255	227.103
Maniitsoq	257.514	210.288	107.762	145.332
Sisimiut	288.764	361.405	116.831	176.632
Kangaatsiaq	227.791	133.356	74.744	109.129
Aasiaat	267.512	251.981	95.810	140.711
Qasigiannquit	286.534	293.378	98.479	141.222
Ilulissat	310.597	296.890	106.989	157.856
Qeqertarsuaq	208.847	234.086	108.777	157.622
Uummannaq	279.590	232.839	87.235	125.261
Upernavik	315.367	238.706	74.636	108.444
Qaanaaq	319.675	233.096	77.926	110.472
Ammassalik	345.415	285.467	73.904	110.536
Illoqqortoormiut	333.332	247.333	80.915	107.138

Building cost indices, annual change

	1987/88	1992/93	1997/98	2002/03
	----- PER CENT -----			
Single-family houses	2,45	-	1,75	2,39
Multi-family houses	1,80	0,96	1,75	1,58
Water/Sewer	2,35	0,93	0,87	4,05

Consumer price index and its sub-indices, annual change

	1999/00	2000/01	2001/02	2002/03
	----- PER CENT -----			
Consumer price index, total	1,65	2,87	4,18	1,43
Food	2,94	3,59	3,91	2,91
Beverages	-0,28	0,75	0,37	0,19
Tobacco	8,49	-0,08	1,83	0,08
Clothing and footwear	-0,20	1,30	1,18	1,85
Gross rent (dwelling)	1,19	1,47	10,07	-0,70
Fuel and power	-	6,42	4,47	-
Furniture, household equipment, etc.	-0,45	1,08	1,78	0,70
Medical care and health expenses	-2,05	-3,61	4,34	-1,98
Transport	1,10	9,88	3,38	2,00
Communication	-5,76	-9,07	-	-4,56
Hunting, fishing, etc.	1,65	2,95	0,59	2,75
Recreation, entertainment, etc.	1,06	3,81	3,67	0,71
Miscellaneous goods and services	1,55	1,89	1,94	3,98

Gross domestic product at factor cost and market prices

	1986	1991	1996	2001
	----- MIO. KR. -----			
Compensation of employees	3.864	5.324	5.752	7.098
Gross operating surplus	911	908	1.139	1.958
GDP at factor cost	4.775	6.232	6.891	9.056
Indirect taxes	329	609	603	672
Subsidies	225	339	549	640
GDP at market prices	4.879	6.502	6.945	9.088
Transfers to Denmark and abroad, net	400	450	200	200
Gross national income	4.479	6.052	6.745	8.888
Government expenditure	2.556	3.061	3.031	3.393
Of which general grants	991	1.589	2.441	2.793
Gross disposable national income	7.035	9.113	9.776	12.281
Of which in the public sector	3.614	4.842	4.653	5.900
Of which in the private sector	3.421	4.271	5.123	6.381
Gen. government final consumption	2.465	3.498	3.740	4.762

Expenditure of general government sector, by function

	1995	1997	1999	2001
	----- MIO. KR. -----			
Total	5.763	5.993	6.484	7.069
General public services	564	650	712	770
Defence, etc.	317	336	275	261
Law and order and safety	144	150	173	188
Education	832	884	1.038	1.215
Health	623	628	712	844
Social security and welfare services	1.235	1.415	1.522	1.703
Housing and community amenities	305	308	381	375
Religious, recreational and cultural services	209	216	231	278
Energy supplies	58	43	46	89
Fishing, agriculture, forestry, etc.	169	156	174	98
Mining and quarrying, manufacturing and construction	283	222	245	245
Communications	287	284	299	298
Commerce, etc.	284	326	348	360
Other functions	454	375	331	347

Companies owned by the Greenland Home Rule Government in 2002

	Turnover	Profit	Employees
	mio. kr.	----- average -----	
Royal Greenland A/S	3.461	61	1.967
KNI Pilersuisoq A/S	1.578	43	925
KNI Pisiffik A/S	564	17	557
Great Greenland	34	11	25
Amutsiviit Greenland Shipyards	24	2	25
INI A/S Housing Company	131	2	325
Royal Arctic Line A/S	1.203	90	664
Air Greenland A/S	1.240	44	553
Tele Greenland A/S	630	42	633
Greenland Field Investigations	5	-6	30
Greenland Energy Supply	587	...	437
Greenland Airport Services	254	-142	452
NunaOil A/S	0	19	4
Nuka A/S	108	-23	309



Imports, by end-use

	1996	1998	2000	2002*
	-----MIO. KR.-----			
Total import	2.719	2.740	2.948	2.891
Intermediate goods for agriculture	20	21	23	24
Intermediate goods for construction industry	324	355	252	428
Intermediate goods for other industries	482	514	452	572
Fuels, lubricants and electric current	267	229	549	258
Machinery and other capital equipment	172	193	187	196
Transport equipment	299	97	226	90
Goods for household consumption	737	890	874	1.024
Goods not elsewhere specified	418	443	386	299

* Provisional figures

Exports, by SITC divisions

	1996	1998	2000	2002*
	-----MIO. KR.-----			
Total export	2.141	1.702	2.205	2.140
Food, live animals, total	1.973	1.598	2.106	1.926
of which:				
Fish and fish products	1.965	1.581	2.104	1.923
Meat and meat products	0	9	2	1
Feeding stuff for animals	7	7	0	2
Beverages and tobacco	0	0	-	0
Raw materials, inedible	7	7	10	10
of which:				
Untreated hides, skin, etc.	7	7	7	9
Mineral fuels and lubricants, etc.	25	30	1	0
Chemicals and chemical products	0	0	0	0
Manufactured products mainly semi-manufactured products	2	1	0	2
Machinery and transport equipment	50	9	15	86
Manufactured products	34	13	14	25
Miscellaneous articles and transactions	51	45	60	91

* Provisional figures

Transportation

In Greenland roads do not connect towns and settlements. Hence passengers and supplies of goods are transported by sea or by air (by airplanes or helicopters). During wintertime dog sleds and snowmobiles are used for transportations too. The main gateway to Greenland is the former American military base Kangerlussuaq. From here traffic to all Greenland is being distributed – either by airplane or by helicopter.



Passenger traffic by air

	1998	1999	2000	2001	2002
	----- NUMBER OF PASSENGERS -----				
Domestic air traffic	218.113	231.887	253.551	215.587	213.814
Airplanes	125.843	169.732	189.177	177.886	173.944
Helicopters	92.270	62.155	64.374	37.701	39.870
Air traffic to/ from Greenland	95.973	100.094	105.995	100.646	103.562
Kangerlussuaq - Copenhagen	72.942	72.924	83.371	78.923	83.116
Narsarsuaq - Copenhagen	13.283	17.630	18.545	18.492	17.018
Greenland - Iceland	7.189	6.530	1.510	3.231	3.428
Nuuk-Iqaluit	406	462	372
Kangerlussuaq-Iqaluit	2.153	2.548	2.197	1.774	...

Passenger traffic and cargo freight by ship

	1998	1999	2000	2001	2002
	----- NUMBER OF PASSENGERS -----				
Passengers, total	100.969	92.544	88.255	93.285	90.527
From town to settlement	58.757	55.537	53.425	56.438	56.442
From town to settlement / settlement to town in:	42.212	37.007	34.830	36.847	34.085
- Region South	22.339	20.445	19.715	21.729	17.489
- Region Central	3.875	4.232	4.054	4.144	2.897
- Region North	10.391	9.561	9.976	10.069	12.756
- District Upernavik	1.997	1.053	.	.	.
- District Uummanaq	2.087	452	.	.	.
- District Tasiilaq	1.523	1.264	1.085	905	943
	----- 1.000 M ³ -----				
Cargo freight, total	593	627	650	654	705
From Denmark to Greenland	306	332	347	341	355
From Greenland to Denmark	162	175	185	204	245
Greenland internal	125	120	118	109	105

Motor vehicles

	1980	1985	1990	1995	2002
Automobiles, total	2.448	3.153	3.251	3.603	4.211
Cars	1.043	1.479	1.754	1.881	2.520
Taxis	243	230	220	171	210
Ambulances, etc.	20	25	29	36	31
Busses	29	27	44	52	72
Fire-engines	71	74	66	91	96
Commercial vehicles and trucks	1.042	1.318	1.138	1.372	1.282
Motor cycles	41	13	7	2	10
Other vehicles	10	27	69	18	13
Cars per 1.000 inhabitants	21,0	27,9	31,6	33,8	44,6

Energy consumption, gross

	1995	1996	1997	1998	1999	2000
	-----GWh-----					
Gross Energy consumption, total	2.179	2.334	2.358	2.276	2.433	2.715
Coal, coke and brown coal	-	-	-	-	-	-
Water power	165	168	156	164	178	178
Other renewable energy sources	29	29	26	29	32	34
Motor gasoline	103	99	106	118	121	124
Gas/Diesel oil	1.635	1.772	1.795	1.704	1.775	2.056
Kerosene and Jet fuel	237	259	270	253	314	312
Liquid gas (LPG)	3	3	3	3	2	2
Oil for non-heating purposes	8	5	3	5	12	9

Production of electricity, water and heat

	1996	1997	1998	1999	2000	2001	2002
	-----GWh-----						
Production of electricity and heat, total	566	577	551	586	510	497	524
Electricity	279	274	281	295	298	284	311
Heat	208	205	206	218	212	213	213
	-----1.000 M ³ -----						
Water	5.430	5.453	5.401	5.383	5.628	5.334	5.516

Outlet of CO₂ from energy consumption

	1990	1995	1996	1997	1998	1999	2000
	-----TONNES-----						
Total	627	525	566	577	551	586	662
Gas oil	552	436	472	478	454	473	548
Kerosene	50	61	67	70	66	81	81
Gasoline	23	27	26	28	31	32	33
Other	1	1	1	1	1	0	0
	-----KG-----						
Outlet of CO ₂ per capita	11,3	9,4	10,1	10,3	9,8	10,5	11,8

Primary schools in Greenland

	1998/99	1999/00	2000/01	2001/02	2002/03
	----- NUMBER OF PERSONS -----				
Pupils, total	11.087	11.164	11.315	11.368	11.350
School teachers, total	1.047	1.109	1.114	1.191	1.222
Teachers born in Greenland	824	865	888	944	961
Teachers born in Denmark	223	244	226	247	261
Teachers per 100 pupils	9,4	9,9	9,8	10,5	10,8
	----- HOURS -----				
Teachers hours per pupil	2,87	2,95	3,28	3,17	3.26

Expenditure on primary schools, high schools etc.

	1994	1996	1998	2000	2002
	----- MIO. KR. -----				
Total expenditure	435	476	486	512	613
Home Rule expenditure	332	357	366	378	394
Municipal expenditure	103	119	120	135	219
Tertiary /high schools etc.	34	38	43	45	46
Home Rule-owned schools	8	12	14	15	14
Continuing training	25	25	24	23	24
Other	17	19	19	31	38

Number of persons according to the most advanced level of training achieved

	1980	1985	1990	1995	2000
Completed educations, total	14	141	752	602	400
Vocational educations and training, total	5	79	590	389	269
of which:					
Commerce and office	-	26	254	156	93
Social and Health	-	4	32	77	68
Middle-range training, total	9	50	127	163	114
of which:					
Teacher training	-	3	13	21	33
Commerce, computer science, etc.	5	8	28	43	24
University education, total	-	11	34	48	17
of which:					
Natural science educations	-	-	2	2	3
Social science educations	-	3	11	10	9
Humanistic educations	-	4	4	11	2
Commercial educations	-	3	8	10	1
Other educations, total	-	1	1	2	-

Broadcasts by Greenlandic Radio/TV (KNR)

	1994	1996	1998	2000	2002
	----- HOURS PER YEAR -----				
Radio, total number of hours	5.368	5.035	5.972	5.812	6.160
Spoken broadcasts					
in Greenlandic	2.406	2.765	2.614	2.728	2.920
In Danish etc.	861	825	1.296	1.019	1.080
Musical broadcasts	2.101	1.445	2.062	2.065	2.160
TV, total	2.335	3.049	3.314	3.739	3.827
In Greenlandic	271	357	667	693	659
In other languages	2.064	2.692	2.647	3.046	3.168

Books published

	1998	1999	2000	2001	2002
	----- NUMBER OF TITLES -----				
Total	102	111	137	127	139
Non-fiction	10	6	23	14	6
Fiction	11	16	18	17	30
Books for children	13	16	20	11	13
Educational books	49	67	68	74	88
Other books	19	6	8	11	2

First name top-10 2003

	Boys/Men	Number		Girls/Women	Number
1	Hans	1.062	1	Ane	765
2	Jens	907	2	Marie	550
3	Karl	816	3	Karen	510
4	Peter	750	4	Johanne	375
5	Lars	661	5	Sofie	361
6	Niels	573	6	Dorthe	307
7	Ole	534	7	Margrethe	275
8	Kristian	511	8	Sara	249
9	Jørgen	453	9	Helene	245
10	Jakob	413	10	Else	241

Nights spent at hotels, by nationality

	1996	1998	2000	2002
	----- NUMBER OF NIGHTS -----			
Numbers of nights spent, total	171.147	200.573	209.468	179.349
Greenland	88.197	112.317	105.021	94.552
Denmark	55.273	62.083	69.311	55.602
Sweden	1.243	1.419	5.686	1.954
Norway	1.823	1.429	2.129	1.695
Iceland	2.055	2.196	1.682	1.697
Germany	4.722	4.375	4.735	4.491
France	1.301	818	1.016	1.057
Italy	1.390	754	825	493
Netherlands	245	307	469	463
United Kingdom	1.992	1.468	1.795	2.048
Rest of Europe	3.471	2.489	2.631	2.646
USA	3.311	6.378	9.043	6.227
Japan	1.140	1.274	1.579	1.940
Canada	1.594	1.963	1.994	2.177
Other countries	3.390	1.303	1.337	2.307
Unknown	-	-	215	-



Consumption of alcoholic beverages

	1994	1996	1998	2000	2002
	-----1.000 LITERS-----				
Total consumption	9.288	9.286	9.502	9.726	8.372
Beer	8.386	8.566	8.701	8.887	7.415
Wine	725	572	625	672	789
Spirits	177	148	175	168	168
Average consumption of alcohol	-----LITERS OF 100 PER CENT-----				
Per person	9,6	9,3	9,7	9,7	9,1
Per person older than 14 years	13.2	12.6	13.3	13.4	12.3

Consumption of cigarettes

	1994	1996	1998	2000	2002
	-----MIO. PIECES-----				
Total consumption	126.6	130.9	124.9	111.2	115.4
Average consumption	-----PIECES PER DAY-----				
Per person	6,2	6,4	6,1	5,4	5,6
Per person older than 14 years	8,6	8,9	8,4	7,4	7,6

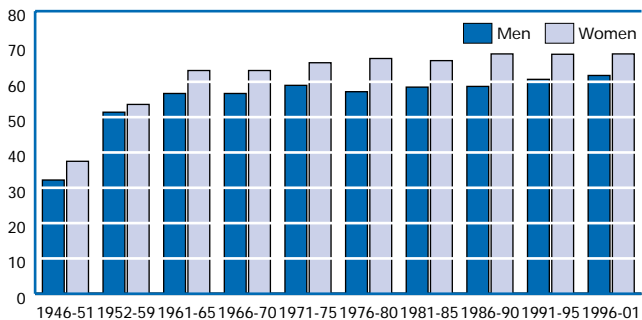
Legal abortions

	1982	1987	1992	1997	2002
Number of abortions	-----NUMBERS-----				
All Greenland	561	823	921	843	821
Abortions by age of woman	-----PER CENT-----				
14 - 15 years	4,3	2,9	3,9	5,3	3,7
16 - 17 years	13,0	7,7	8,4	8,8	9,0
18 - 19 years	14,4	12,3	7,7	9,1	14,4
20 - 24 years	27,1	37,1	28,1	24,7	30,0
25 - 29 years	18,0	21,0	29,8	24,7	15,2
30 - 34 years	12,1	10,5	13,9	19,2	13,9
35 - 39 years	8,0	6,0	5,9	7,1	9,7
40 - 44 years	2,3	2,1	2,4	0,9	4,0
45 - 49 years	0,7	0,6	-	0,1	0,1

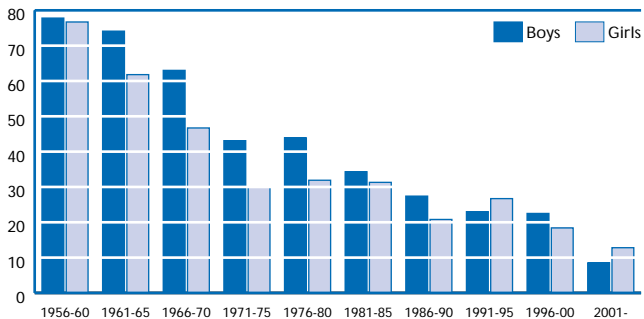
Reported infectious diseases

	1972	1977	1982	1987	1992	1997	2002
	-----NUMBER OF PERSONS-----						
Measles	726	24	499	10	-	-	-
German measles	302	453	26	27	-	-	-
Mumps	453	26	62	217	-	-	-
Whooping cough	-	61	31	1	-	-	-
Scarlet fever	19	7	30	4	9
Influenza	2746	382	801	2148	660
Meningitis	-	15	15	-	9	9	
Hepatitis	1459	50	7	-	6	9	0
Tuberculosis	27	20	10	-	41	88	87
HIV positive	-	-	-	4	2	12	7
AIDS	-	-	-	-	8	5	...
Syphilis	207	661	177	371	34	1	1
Gonorrhoea	11317	10096	13063	2370	980	628	872

Life expectancy for newborn boys and girls



Infant mortality for boys and girls per 1,000 living newborn



Number of dwellings in 2002, by municipality

	Dwellings completed	Dwellings total	Need for houses	Covering percentage	Persons per house	
					Towns	Settlements
Greenland, total	187	20.715	25.851	80,1	2,4	2,7
Nanortalik	2	1.001	1.109	90,3	2,4	2,1
Qaqortoq	2	1.351	1.620	83,4	2,2	1,9
Narsaq	1	807	969	83,3	2,0	4,1
Paamiut	..	1.067	976	109,3	1,7	1,6
Nuuk	122	5.316	7.163	74,2	2,4	2,2
Maniitsoq	2	1.473	1.701	86,6	2,3	2,6
Sisimiut	11	1.909	2.471	77,3	2,6	2,8
Kangaatsiaq	3	447	698	64,0	3,3	3,3
Aasiaat	12	1.277	1.610	79,3	2,5	2,2
Qasigiannuguit	..	620	650	95,4	2,2	2,2
Ilulissat	14	1.641	2.332	70,4	2,8	2,6
Qeqertarsuaq	1	428	460	93,0	2,3	2,0
Uummannaq	12	1.030	1.127	91,4	2,5	2,5
Upernavik	2	789	1.154	68,4	2,9	3,9
Qaanaaq	..	350	353	99,2	2,6	1,5
Ammassalik	3	990	1.253	79,0	3,2	2,5
Illoqqortoormiut	..	219	204	107,4	2,9	0,4

* Dwellings total and need for houses on January 1st 2003.

* The Need for houses is a theoretical estimation of the potential demand for houses in case that all singles or couples from the age of 20 should be assigned a house.

* Persons per house Januar 1st 2003.

Reported criminal offences

	1980	1990	2000	2001	2002
Offences, total	6.197	7.452	7.072	7.309	7.244
Sexual offences, total	119	325	441	460	413
Rape and attempted rape	-	162	178	191	188
Incest	119	138	250	240	220
Other sexual offences	-	25	13	29	5
Crimes of violence, total	425	508	691	812	847
Assault	358	415	660	772	796
Homicide and attempted homicide	29	59	24	29	35
Other offences against life or body	38	34	7	11	16
Offences against property, total	4.113	4.425	3.789	3.768	3.850
Housebreaking	1.304	1.213	789	787	813
Theft	1.736	1.846	1.859	1.825	2.009
Fraud, embezzlement, etc.	146	416	231	204	183
Malicious damage	754	832	846	839	782
Other offences against property	173	118	64	113	63
Other offences, total	299	401	509	546	519
Offences against special legislation of this selling and smuggling of narcotics	1.241	1.793	1.642	1.723	1.615
of narcotics	60	419	517	499	470
Number of charged persons	4.826	4.143	3.769	4.786	4.530
Persons younger than 15 years	282	517	331	226	280

Recidivists distributed by age groups and year of release

	1991			1995		
	1-3 years	4-5 years	1-5 years	1-3 years	4-5 years	1-5 years
	----- PER CENT -----					
Total	40,0	8,6	48,5	36,8	10,8	47,7
15-19 years	54,4	6,6	61,1	54,5	10,5	65,1
20-24 years	51,6	9,1	60,6	44,1	11,8	55,9
25-29 years	42,2	11,5	53,6	40,6	12,4	52,9
30-34 years	38,0	9,4	47,4	34,9	13,4	48,4
35-39 years	27,8	8,3	36,1	34,5	8,4	42,9
40-44 years	23,9	4,4	28,3	30,6	8,1	38,7
45-49 years	13,3	4,8	18,1	10,3	9,0	19,2
50-54 years	16,3	2,0	18,4	12,3	7,0	19,3
55-60 years	7,4	3,7	11,1	6,1	-	6,1
60 years and more	18,2	-	18,2	8,3	-	8,3

Mean temperature in 2002, selected towns

	Qaqortoq	Kangerlussuaq	Aasiaat	Ammassalik
----- CELSIUS -----				
January	-4,5	-16,7	-7,5	-5,4
February	-7,4	-26,4	-19,8	-9,0
March	-5,6	-20,5	-16,6	-7,3
April	-0,5	-11,9	-9,3	-2,5
Mai	4,7	4,4	1,3	1,5
June	5,6	10,2	4,2	6,5
July	7,3	9,8	6,3	6,8
August	7,2	7,4	5,6	5,7
September	6,7	5,4	4,4	5,1
October	3,1	-6,0	-0,8	0,7
November	1,0	-10,1	-2,6	1,1
December	-0,5	-12,8	-5,4	-1,2

Precipitation in 2002, selected towns

	Qaqortoq	Kangerlussuaq	Aasiaat	Ammassalik
----- MM -----				
January	76	14	27	97
February	76	2	6	76
March	94	1	18	96
April	45	7	6	59
Mai	46	1	2	50
June	101	7	11	85
July	139	35	23	53
August	102	23	23	67
September	171	11	22	157
October	14	4	6	100
November	3	10	17	76
December	67	7	18	111

Telecommunication

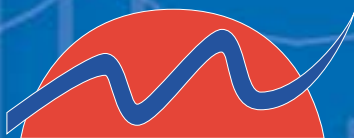
	1995	1997	1999	2001
	----- NUMBERS -----			
Telephone subscribers	19.600	23.400	25.600	26.300
Cellular phones	2.100	6.481	12.676	16.315
Internet subscribers	..	1.462	4.008	7.344

Facts about Greenland...

You can find statistics at

www.statgreen.gl

- POPULATION
- FISHING AND HUNTING
- LABOUR MARKET
- INCOME
- PRICES AND ECONOMY
- FOREIGN TRADE
- ENERGY
- EDUCATION
- TOURISM
- SOCIAL WELFARE
- HOUSING



STATISTICS GREENLAND

Telephone: +299 34 50 00 Fax: +299 32 29 54

E-mail: stat@gh.gl



The world's largest island

Geographical Greenland is part of the North American continent, geopolitical a part of Europe. Greenland is a mountainous country and the world's largest island with a total area of 2,415,100 sq. km. Of this 85 per cent is covered with ice, while the rest is free of ice. The temperature of the warmest month does not exceed 10 degrees celcius. Generally speaking, the further north, the colder, drier and less windy is becomes. July is the warmest month, while February and March are the coldest.

Largest distances:

North-South: 2,670 km. East-West: 1,050 km. Coastline: 39,000 km

Highest point: Gunnbjörns fjeld 3,733 m